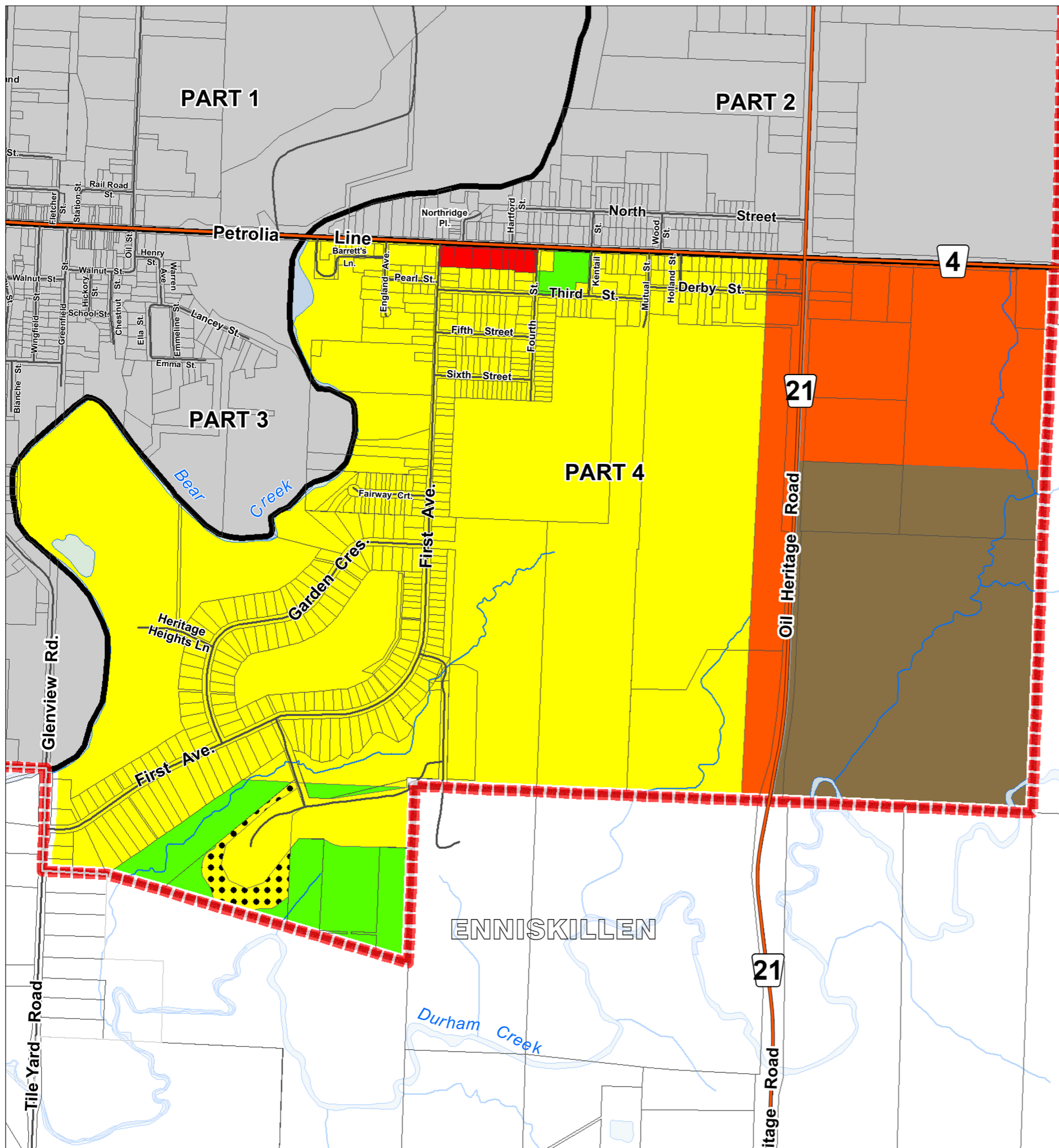


Town of Petrolia OFFICIAL PLAN PART 4 to Schedule "A"



LEGEND

- Assessment Parcels
- Rivers - Streams - Drainage
- Roads
- Waterbodies
- Municipal Boundary
- Schedule Inset Boundaries ("Part 1".... Part 4")
- County Roads

Official Plan - Designations

- Residential
- Residential Special Policy Area
- General Commercial
- Highway Commercial
- Industrial
- Major Open Space

Lambton County Official Plan - Designations

- Urban Centre Area Boundary

The settlement area boundary shown is derived from the County of Lambton Official Plan and does not form part of the Brooke-Alvinston Official Plan. It is provided as a visual aid for information purposes only.

Reference

Disclaimer: These digital mapping products have been produced on the County of Lambton's Geographic Information System. Data provided herein is derived from sources with varying levels of accuracy and currency. This is not a survey product. The County of Lambton disclaims all responsibility for the accuracy or completeness of information contained herein. The County of Lambton assumes no responsibility for errors arising from use of these digital mapping products.

The Official Plan information contained herein is current as of the last recorded amendment noted under "Official Plan Amendments".

- Cadastral database is current to November 2022.

Projection: UTM NAD 83 Zone 17

Consultant: NPG Planning Solutions, April 2023.

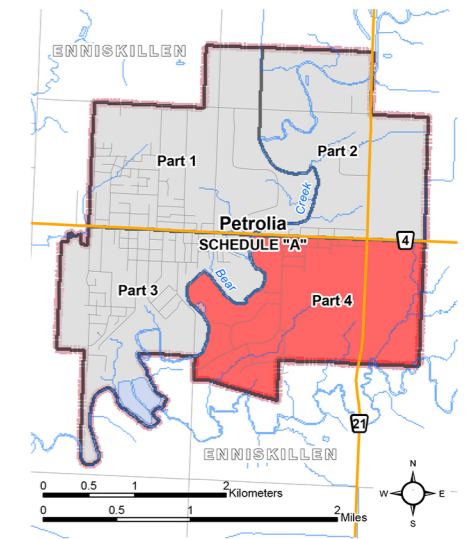
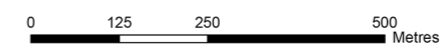
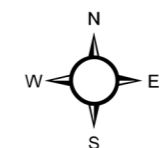
COUNTY OF LAMBTON
Planning and Development Services, April 2023.

www.lambtononline.ca

Area Estimator

2.5 Acres	1.25 Acres	1.25 Acres
1.25 Acres	1.25 Acres	

Notes: Area measures shown at left are typical of Concession/Lot arrangements in the Town of Petrolia. Acre area measures can be converted to hectares (ha) by dividing by (2.471).



Town of Petrolia OFFICIAL PLAN PART 4 to Schedule "A"

to By-law No. 35 of 2023

Passed this 11 day of September, 2023

R. Brad Loosley, Mayor

Rick Charlebois, CAO/Treasurer

Official Plan Amendments

XX

