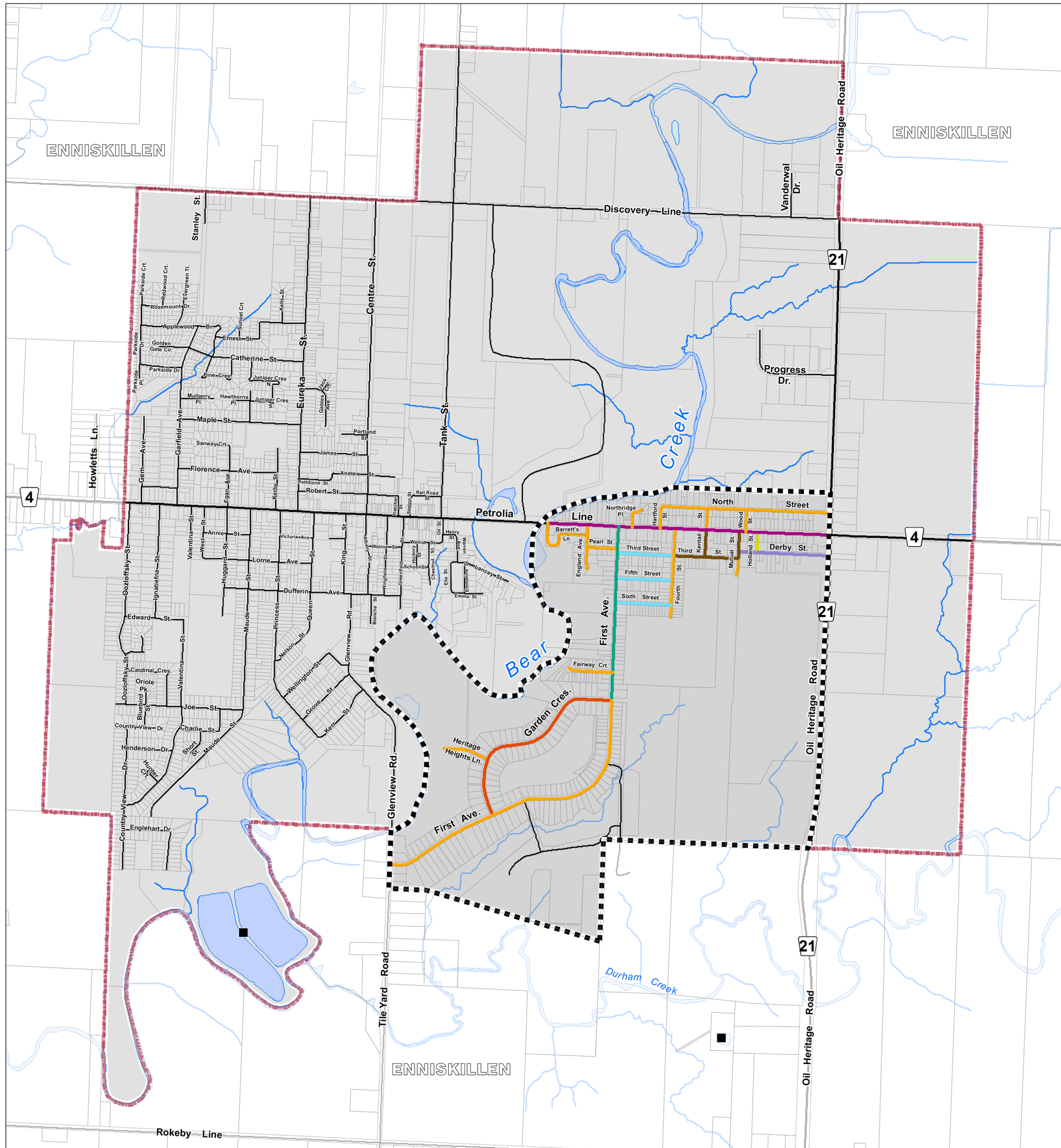


Town of Petrolia OFFICIAL PLAN APPENDIX 2

Proposed Storm Drainage Phasing



LEGEND

- Assessment Parcels
- Rivers - Streams - Drainage
- Roads
- County Roads
- Municipal Boundary
- Waterbodies
- Sewage Treatment Works

Thematic Legend

Proposed Storm Drainage Phasing Plan - Existing Developed Areas within the Southeast Service Area

RECONSTRUCTION PRIORITIES

- 1) Third Street; Fourth Street to Mutual Street
Kentail Street; Third Street to Petrolia Line
Mutual Street; Third Street to Petrolia Line
- 2) Derby Street; Mutual Street to Oil Heritage Road
- 3) Holland Street; Petrolia Line to Derby Street
- 4) First Ave.; Petrolia Line to Garden Crescent
- 5) Third, Fifth and Sixth Street(s); First Ave. to Fourth Street
- 6) Petrolia Line; Oil Heritage Road to Barrett's Lane
- 7) Garden Crescent; First Ave. to First Ave.
- 8) Remaining Streets within the Developed Area
- Southeast Service Area

Reference

Disclaimer: These digital mapping products have been produced on the County of Lambton's Geographic Information System. Data provided herein is derived from sources with varying levels of accuracy and currency. This is not a survey product. The County of Lambton disclaims all responsibility for the accuracy or completeness of information contained herein. The County of Lambton assumes no responsibility for errors arising from use of these digital mapping products.

The Official Plan information contained herein is current as of the last recorded amendment noted under "Official Plan Amendments".

- Cadastral database is current to November 2022.
- Proposed Storm Drainage Phasing Plan - Existing Developed Areas.
- BM Ross - Municipal Class Environmental Assessment Stormwater Master Plan Servicing Study - Reconstruction Priorities Figure No. 5.1 - June 2021.

Projection: UTM NAD 83 Zone 17

Consultant: NPG Planning Solutions, April 2023.

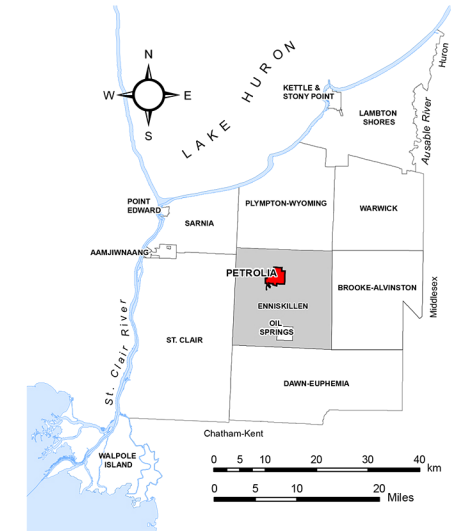
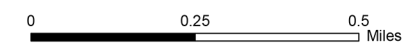
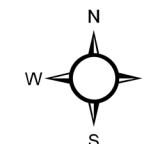
COUNTY OF LAMBTON
Planning and Development Services, April 2023.

www.lambtononline.ca

Area Estimator

2.5 Acres	12.7 Acres	12.7 Acres
1.25 Acres	1.25 Acres	1.25 Acres

Notes: Area measures shown at left are typical of Concession/Lot arrangements in the Town of Petrolia.
Acre area measures can be converted to hectares (ha) by dividing by (2.471).



Town of Petrolia OFFICIAL PLAN APPENDIX 2 Proposed Storm Drainage Phasing

to By-law No. 35 of 2023

Passed this 11 day of September, 2023

R. Brad Loosley, Mayor

Rick Charlebois, CAO/Treasurer

Appendix Amendments

XX

