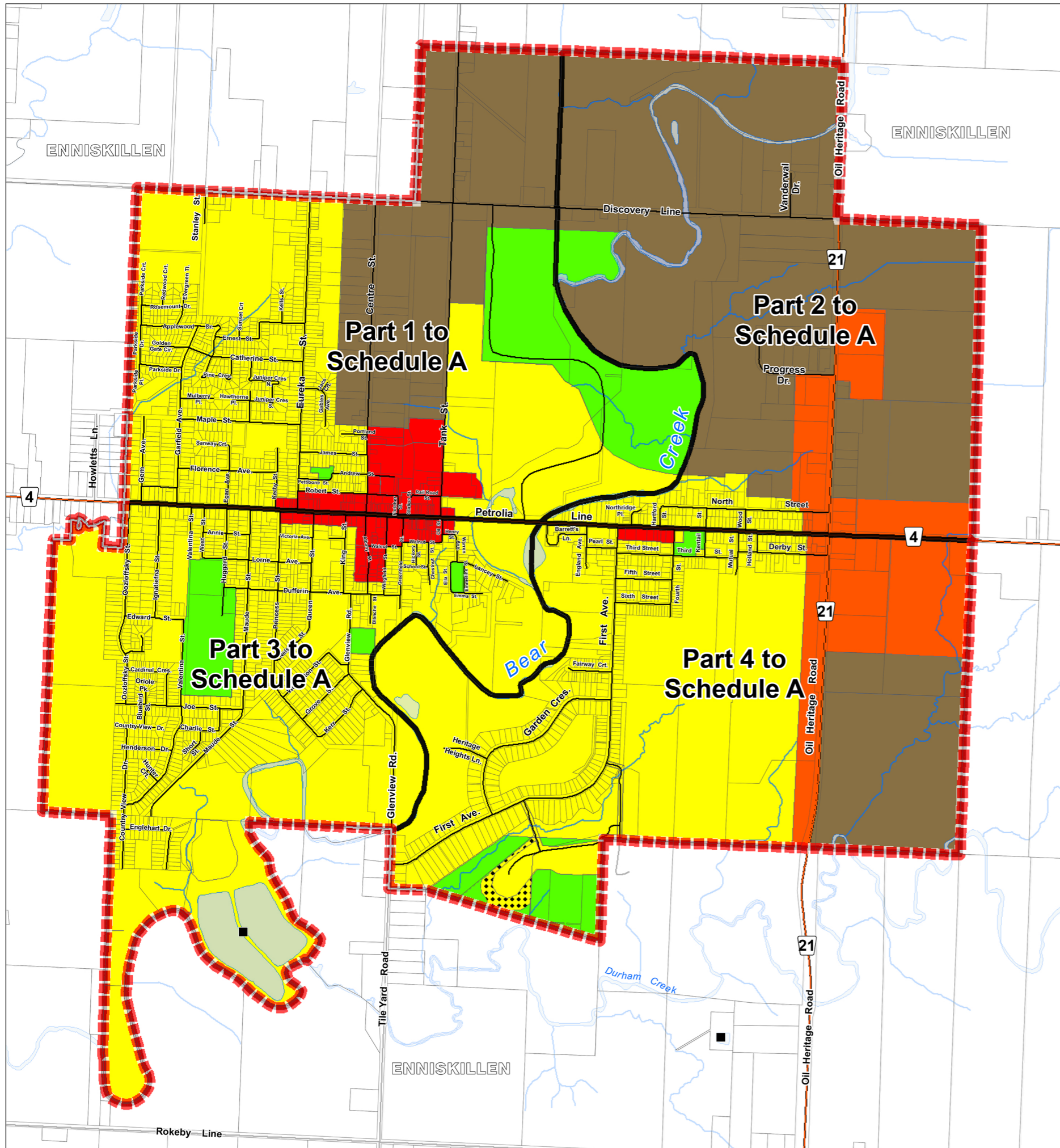


Town of Petrolia OFFICIAL PLAN SCHEDULE "A"



LEGEND

- Assessment Parcels
- Rivers - Streams - Drainage
- Roads
- County Roads
- Waterbodies
- Sewage Treatment Works
- Municipal Boundary
- Schedule Inset Boundaries ("Part 1"..... Part 4")

Official Plan - Designations

- Residential
- Residential Special Policy Area
- General Commercial
- Highway Commercial
- Industrial
- Major Open Space

Lambton County Official Plan - Designations

- Urban Centre Area Boundary

The settlement area boundary shown is derived from the County of Lambton Official Plan and does not form part of the Brooke-Alvinston Official Plan. It is provided as a visual aid for information purposes only.

Reference

Disclaimer: These digital mapping products have been produced on the County of Lambton's Geographic Information System. Data provided herein is derived from sources with varying levels of accuracy and currency. This is not a survey product. The County of Lambton disclaims all responsibility for the accuracy or completeness of information contained herein. The County of Lambton assumes no responsibility for errors arising from use of these digital mapping products.

The Official Plan information contained herein is current as of the last recorded amendment noted under "Official Plan Amendments".

- Cadastral database is current to November 2022.

Projection: UTM NAD 83 Zone 17

Consultant: NPG Planning Solutions, April 2023.

COUNTY OF LAMBTON
Planning and Development Services, April 2023.

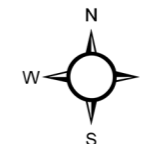
www.lambtononline.ca

Area Estimator

3.5 Acres	12.7 Hectares
1.25 Acres	4.2 Hectares
1.35 Acres	4.5 Hectares

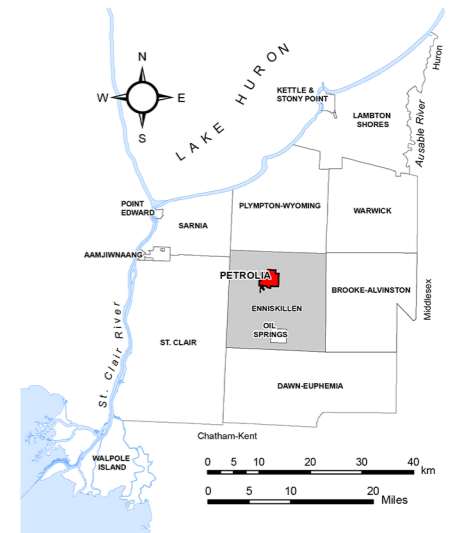
Notes: Area measures shown at left are typical of Concession/Lot arrangements in the Town of Petrolia.

Acre area measures can be converted to hectares (ha) by dividing by (2.471).



0 0.25 0.5 1 Kilometers

0 0.25 0.5 Miles



Town of Petrolia OFFICIAL PLAN SCHEDULE "A"

to By-law No. 35 of 2023

Passed this 11 day of September , 2023

R. Brad Loosley, Mayor

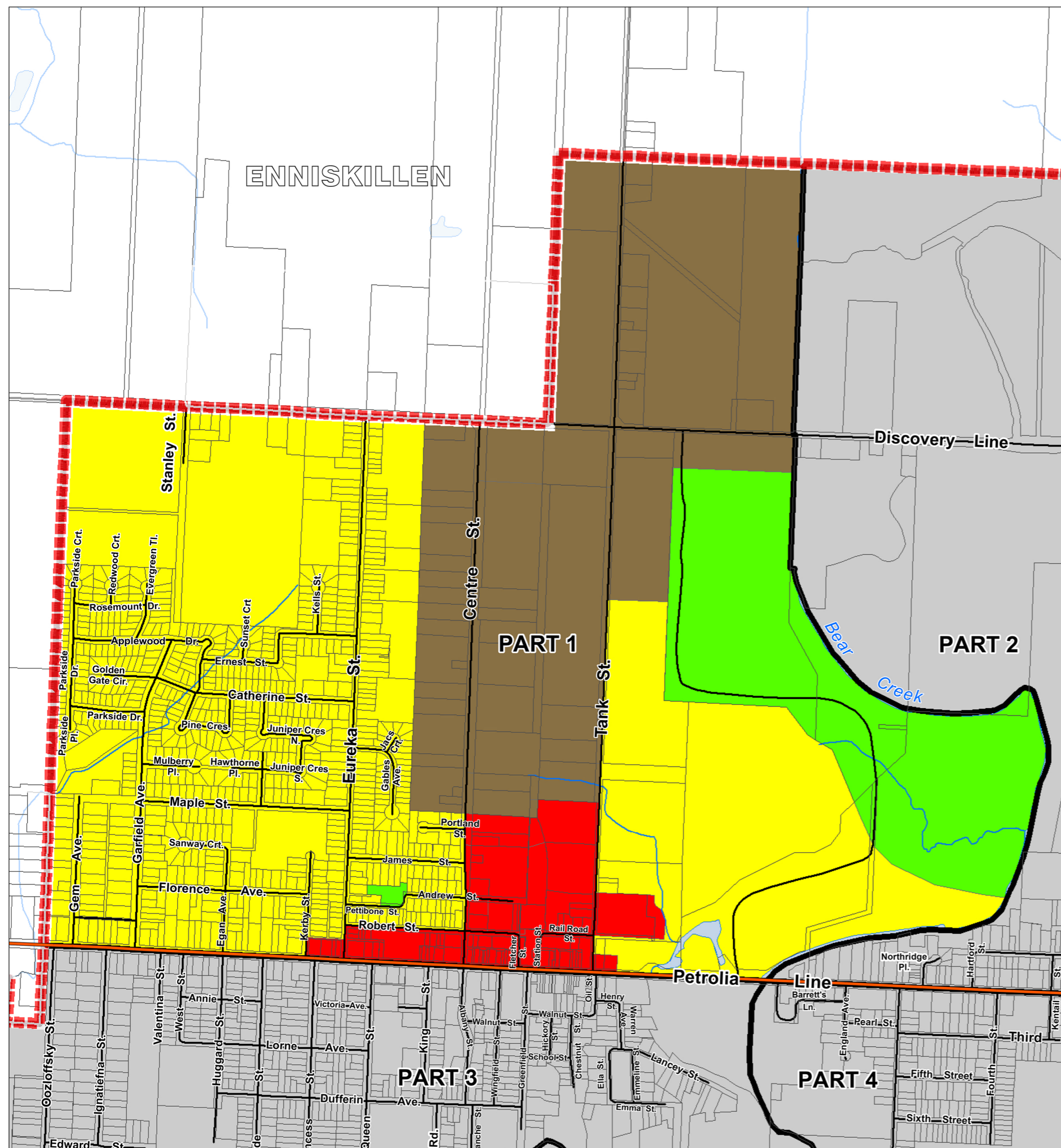
Rick Charlebois, CAO/Treasurer

Official Plan Amendments

XX



Town of Petrolia OFFICIAL PLAN PART 1 to Schedule "A"



LEGEND

- Assessment Parcels
- Rivers - Streams - Drainage
- Municipal Boundary
- Roads
- County Roads
- Schedule Inset Boundaries ("Part 1"..... Part 4")
- Waterbodies

Official Plan - Designations

- Residential
- General Commercial
- Industrial
- Major Open Space

**Lambton County
Official Plan - Designations**

- Urban Centre Area Boundary

The settlement area boundary shown is derived from the County of Lambton Official Plan and does not form part of the Brooke-Alvinston Official Plan. It is provided as a visual aid for information purposes only.

Reference

Disclaimer: These digital mapping products have been produced on the County of Lambton's Geographic Information System. Data provided herein is derived from sources with varying levels of accuracy and currency. This is not a survey product. The County of Lambton disclaims all responsibility for the accuracy or completeness of information contained herein. The County of Lambton assumes no responsibility for errors arising from use of these digital mapping products.

The Official Plan information contained herein is current as of the last recorded amendment noted under "Official Plan Amendments".

- Cadastral database is current to November 2022.

Projection: UTM NAD 83 Zone 17

Consultant: NPG Planning Solutions, April 2023.

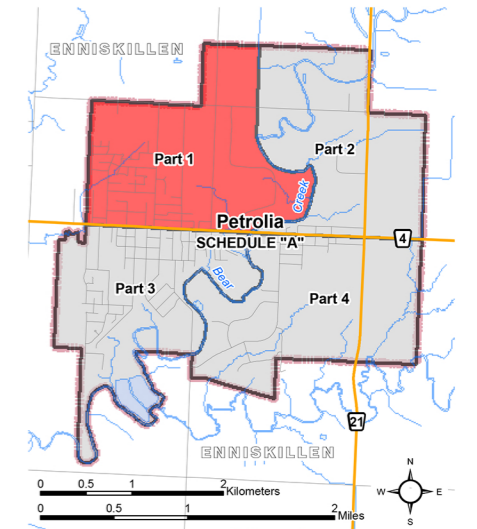
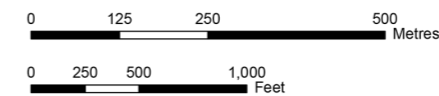
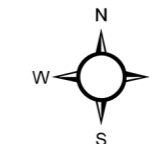
COUNTY OF LAMBTON
Planning and Development Services, April 2023.

www.lambtononline.ca

Area Estimator



Notes: Area measures shown at left are typical of Concession/Lot arrangements in the Town of Petrolia. Acre area measures can be converted to hectares (ha) by dividing by (2.471).



Town of Petrolia OFFICIAL PLAN PART 1 to Schedule "A"

to By-law No. 35 of 2023
Passed this 11 day of September, 2023

R. Brad Loosley, Mayor

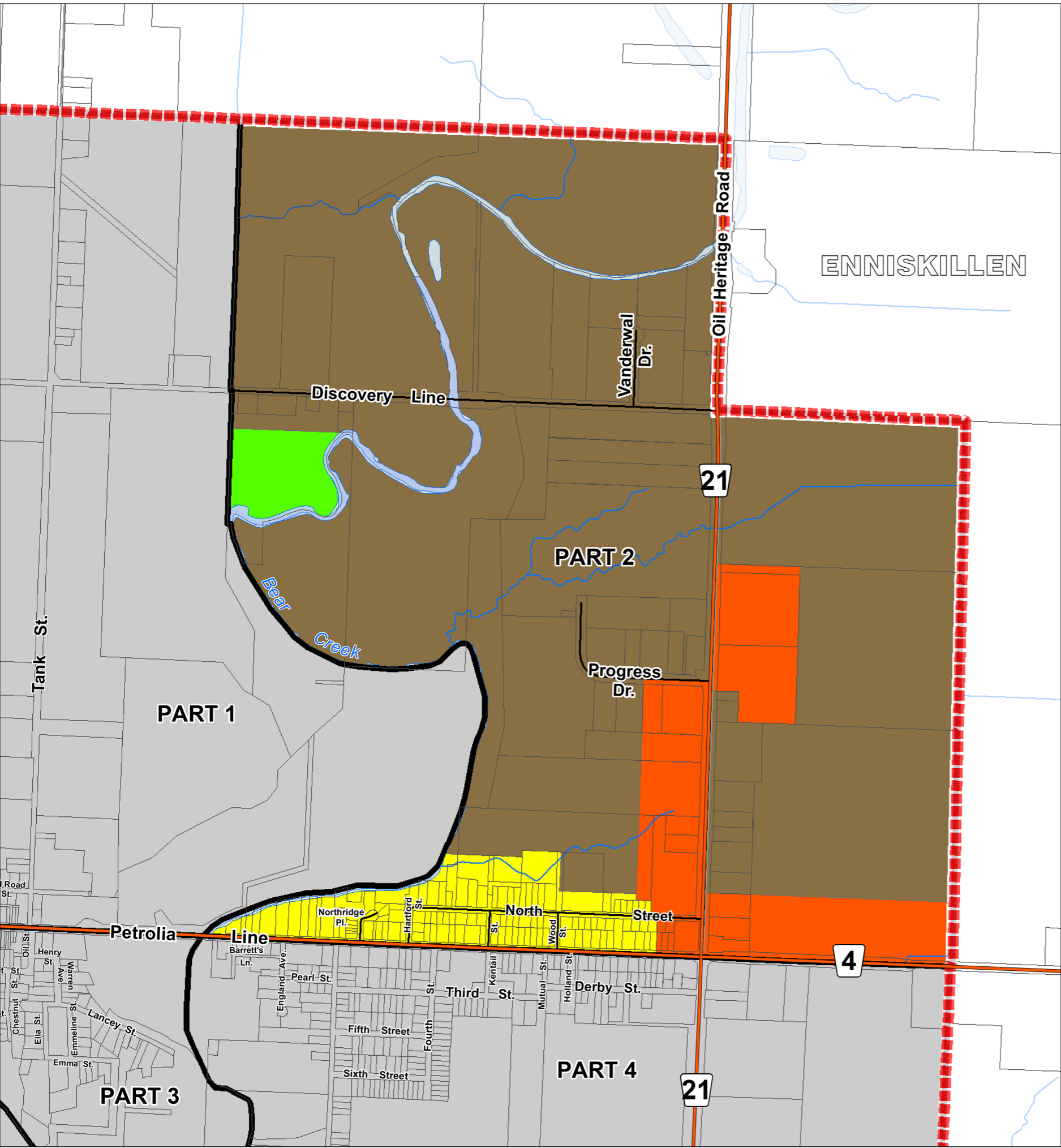
Rick Charlebois, CAO/Treasurer

Official Plan Amendments

XX



Town of Petrolia OFFICIAL PLAN PART 2 to Schedule "A"



LEGEND

- Assessment Parcels
- Rivers - Streams - Drainage
- Roads
- Municipal Boundary
- Schedule Inset Boundaries ("Part 1".... Part 4")
- Waterbodies
- County Roads

Official Plan - Designations

- Residential
- General Commercial
- Highway Commercial
- Industrial
- Major Open Space

Lambton County Official Plan - Designations

- Urban Centre Area Boundary

The settlement area boundary shown is derived from the County of Lambton Official Plan and does not form part of the Brooke-Alvinston Official Plan. It is provided as a visual aid for information purposes only.

Reference

Disclaimer: These digital mapping products have been produced on the County of Lambton's Geographic Information System. Data provided herein is derived from sources with varying levels of accuracy and currency. This is not a survey product. The County of Lambton disclaims all responsibility for the accuracy or completeness of information contained herein. The County of Lambton assumes no responsibility for errors arising from use of these digital mapping products.

The Official Plan information contained herein is current as of the last recorded amendment noted under "Official Plan Amendments".

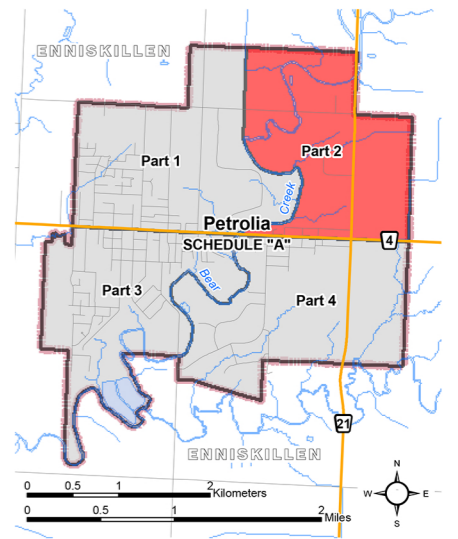
- Cadastral database is current to November 2022.

Projection: UTM NAD 83 Zone 17

Consultant: NPG Planning Solutions, April 2023.

COUNTY OF LAMBTON
Planning and Development Services, April 2023.

www.lambtononline.ca



Town of Petrolia OFFICIAL PLAN PART 2 to Schedule "A"

to By-law No. 35 of 2023
Passed this 11 day of September, 2023

R. Brad Loosley, Mayor Rick Charlebois, CAO/Treasurer

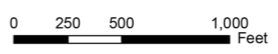
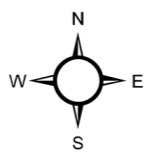
Official Plan Amendments

XX

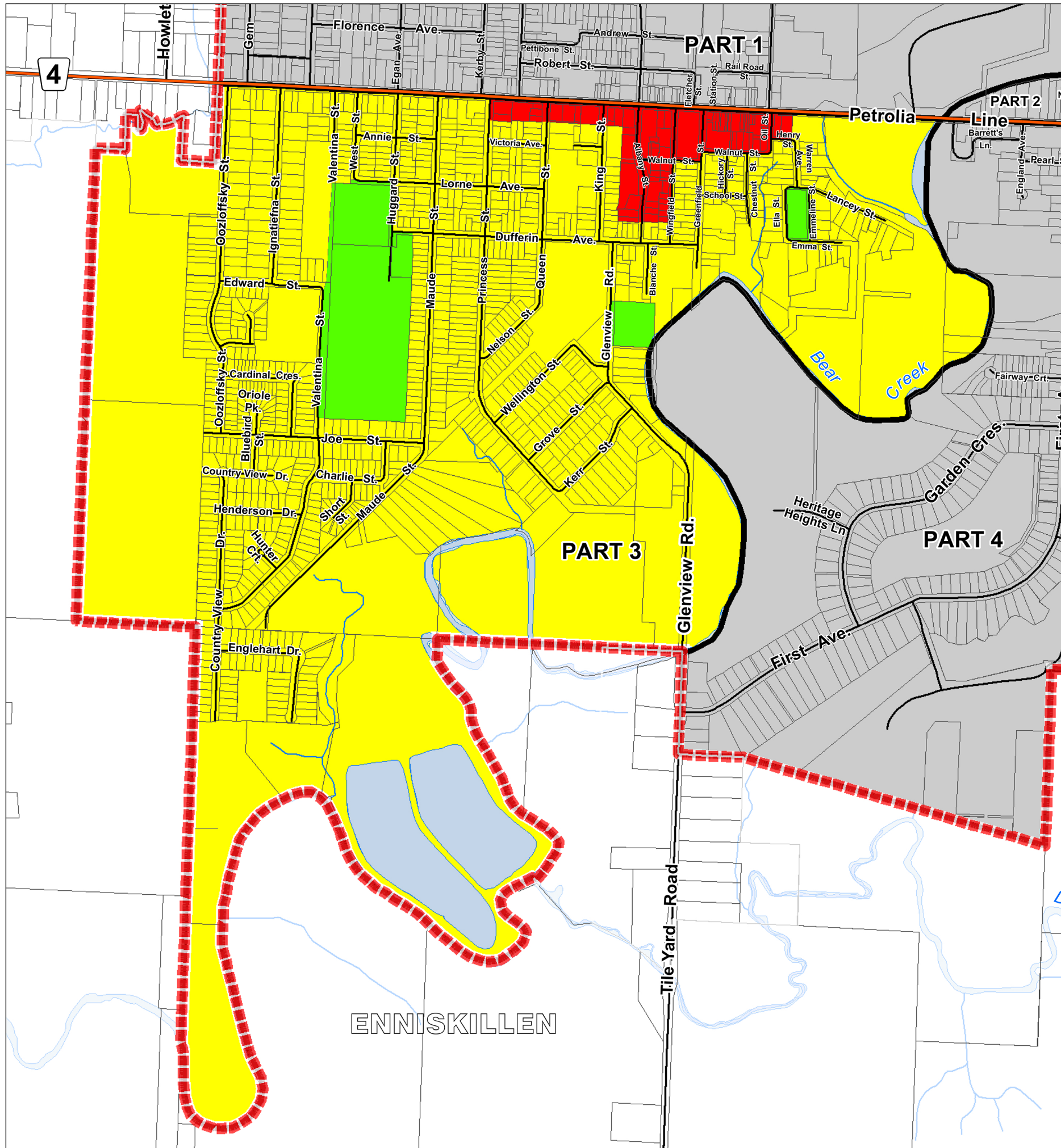
Area Estimator



Notes: Area measures shown at left are typical of Concession/Lot arrangements in the Town of Petrolia. Acre area measures can be converted to hectares (ha) by dividing by (2.471).



Town of Petrolia OFFICIAL PLAN PART 3 to Schedule "A"



LEGEND

- | | |
|-----------------------------|--|
| Assessment Parcels | Waterbodies |
| Rivers - Streams - Drainage | Municipal Boundary |
| Roads | Schedule Inset Boundaries ("Part 1".... Part 4") |
| County Roads | |

Official Plan - Designations

- | |
|--------------------|
| Residential |
| General Commercial |
| Major Open Space |

Lambton County Official Plan - Designations

- | |
|----------------------------|
| Urban Centre Area Boundary |
|----------------------------|

The settlement area boundary shown is derived from the County of Lambton Official Plan and does not form part of the Brooke-Alvinston Official Plan. It is provided as a visual aid for information purposes only.

Reference

Disclaimer: These digital mapping products have been produced on the County of Lambton's Geographic Information System. Data provided herein is derived from sources with varying levels of accuracy and currency. This is not a survey product. The County of Lambton disclaims all responsibility for the accuracy or completeness of information contained herein. The County of Lambton assumes no responsibility for errors arising from use of these digital mapping products.

The Official Plan information contained herein is current as of the last recorded amendment noted under "Official Plan Amendments".

- Cadastral database is current to November 2022.

Projection: UTM NAD 83 Zone 17

Consultant: NPG Planning Solutions, April 2023.

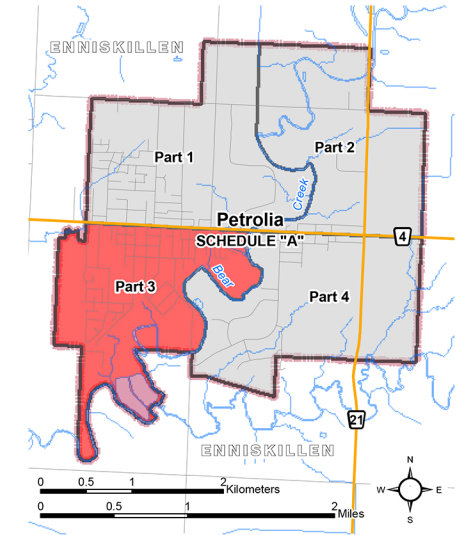
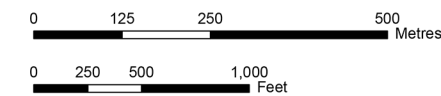
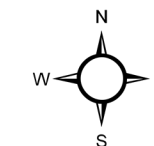
COUNTY OF LAMBTON
Planning and Development Services, April 2023.

www.lambtononline.ca

Area Estimator

2.5 Acres	1.25 Acres	1.25 Acres
1.25 Acres	1.25 Acres	1.25 Acres
1.25 Acres		

Notes: Area measures shown at left are typical of Concession/Lot arrangements in the Town of Petrolia.
Acre area measures can be converted to hectares (ha) by dividing by (2.471).



Town of Petrolia OFFICIAL PLAN PART 3 to Schedule "A"

to By-law No. 35 of 2023

Passed this 11 day of September, 2023

R. Brad Loosley, Mayor

Rick Charlebois, CAO/Treasurer

Official Plan Amendments

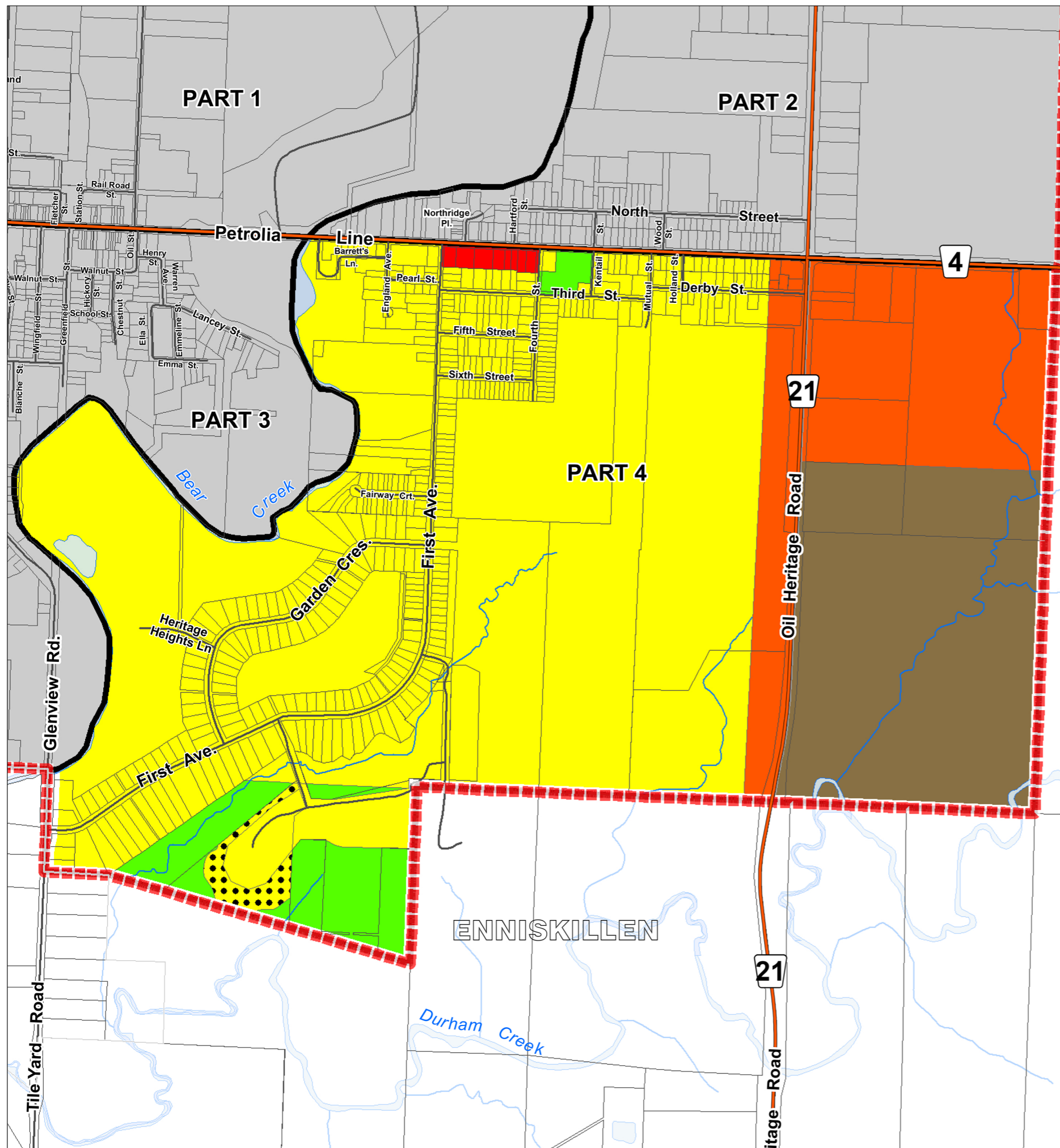
XX



Town of Petrolia

OFFICIAL PLAN

PART 4 to Schedule "A"



LEGEND

- Assessment Parcels
- ~ Rivers - Streams - Drainage
- Roads
- Municipal Boundary
- Schedule Inset Boundaries ("Part 1".... Part 4")
- ☾ Waterbodies
- County Roads
- Schedule Inset Boundaries ("Part 1".... Part 4")

Official Plan - Designations

- Residential
- Highway Commercial
- Industrial
- Major Open Space
- Residential Special Policy Area
- General Commercial

Lambton County Official Plan - Designations

- Urban Centre Area Boundary

The settlement area boundary shown is derived from the County of Lambton Official Plan and does not form part of the Brooke-Alvinston Official Plan. It is provided as a visual aid for information purposes only.

Reference

Disclaimer: These digital mapping products have been produced on the County of Lambton's Geographic Information System. Data provided herein is derived from sources with varying levels of accuracy and currency. This is not a survey product. The County of Lambton disclaims all responsibility for the accuracy or completeness of information contained herein. The County of Lambton assumes no responsibility for errors arising from use of these digital mapping products.

The Official Plan information contained herein is current as of the last recorded amendment noted under "Official Plan Amendments".

- Cadastral database is current to November 2022.

Projection: UTM NAD 83 Zone 17

Consultant: NPG Planning Solutions, April 2023.

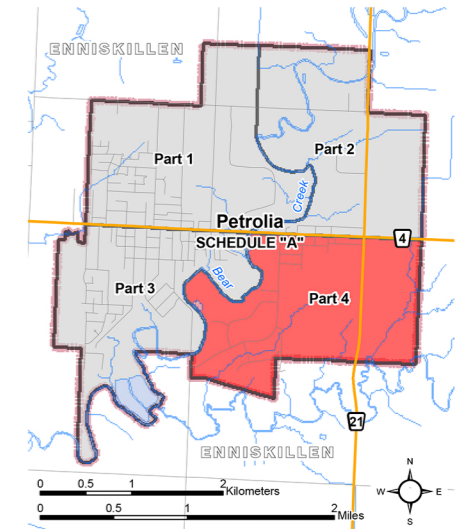
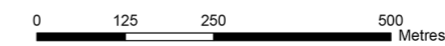
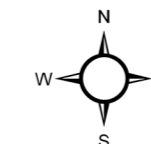
COUNTY OF LAMBTON
Planning and Development Services, April 2023.

www.lambtononline.ca

Area Estimator

2.5 Acres	1.25 Acres	1.25 Acres
1.25 Acres	1.25 Acres	1.25 Acres

Notes: Area measures shown at left are typical of Concession/Lot arrangements in the Town of Petrolia. Acre area measures can be converted to hectares (ha) by dividing by (2.471).



Town of Petrolia

OFFICIAL PLAN

PART 4 to Schedule "A"

to By-law No. 35 of 2023

Passed this 11 day of September, 2023

R. Brad Loosley, Mayor

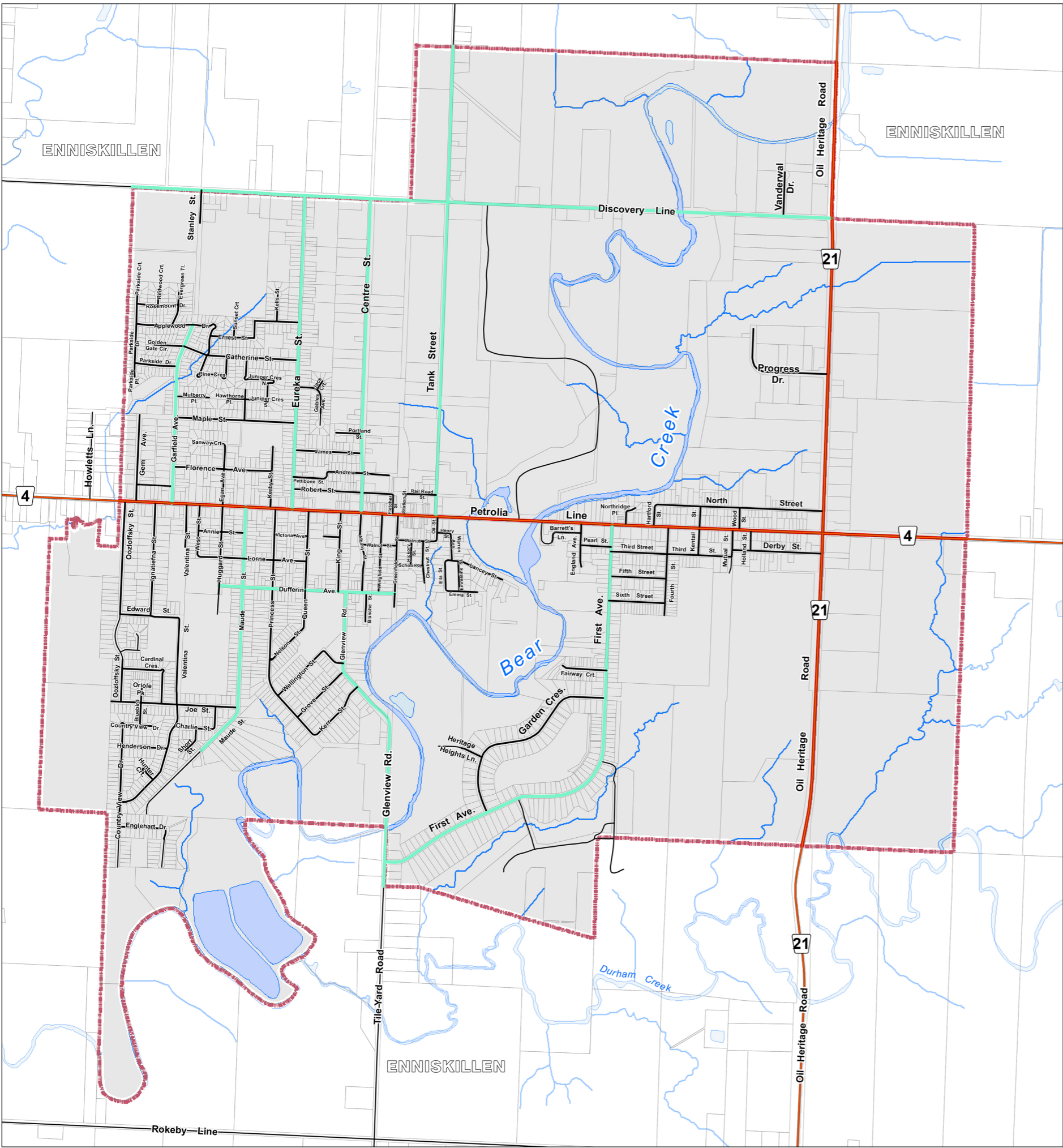
Rick Charlebois, CAO/Treasurer

Official Plan Amendments

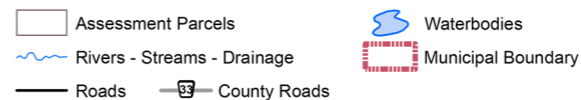
XX



Town of Petrolia OFFICIAL PLAN SCHEDULE "B" Roads Plan



LEGEND



Official Plan - Roads Plan



Reference

Disclaimer: These digital mapping products have been produced on the County of Lambton's Geographic Information System. Data provided herein is derived from sources with varying levels of accuracy and currency. This is not a survey product. The County of Lambton disclaims all responsibility for the accuracy or completeness of information contained herein. The County of Lambton assumes no responsibility for errors arising from use of these digital mapping products. The Official Plan information contained herein is current as of the last recorded amendment noted under "Official Plan Amendments".

- Cadastral database is current to November 2022.

Projection: UTM NAD 83 Zone 17

Consultant: NPG Planning Solutions, April 2023.

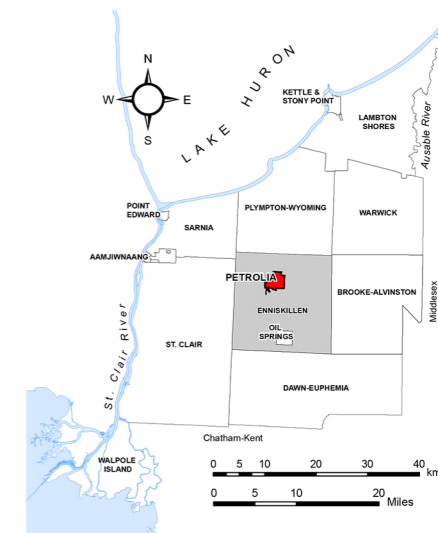
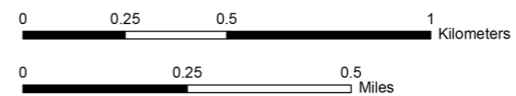
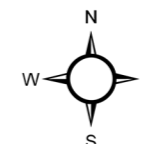
COUNTY OF LAMBTON
Planning and Development Services, April 2023.

www.lambtononline.ca

Area Estimator



Notes: Area measures shown at left are typical of Concession/Lot arrangements in the Town of Petrolia.
Acre area measures can be converted to hectares (ha) by dividing by (2.471).



Town of Petrolia OFFICIAL PLAN SCHEDULE "B" Roads Plan

to By-law No. 35 of 2023

Passed this 11 day of September, 2023

R. Brad Loosley, Mayor

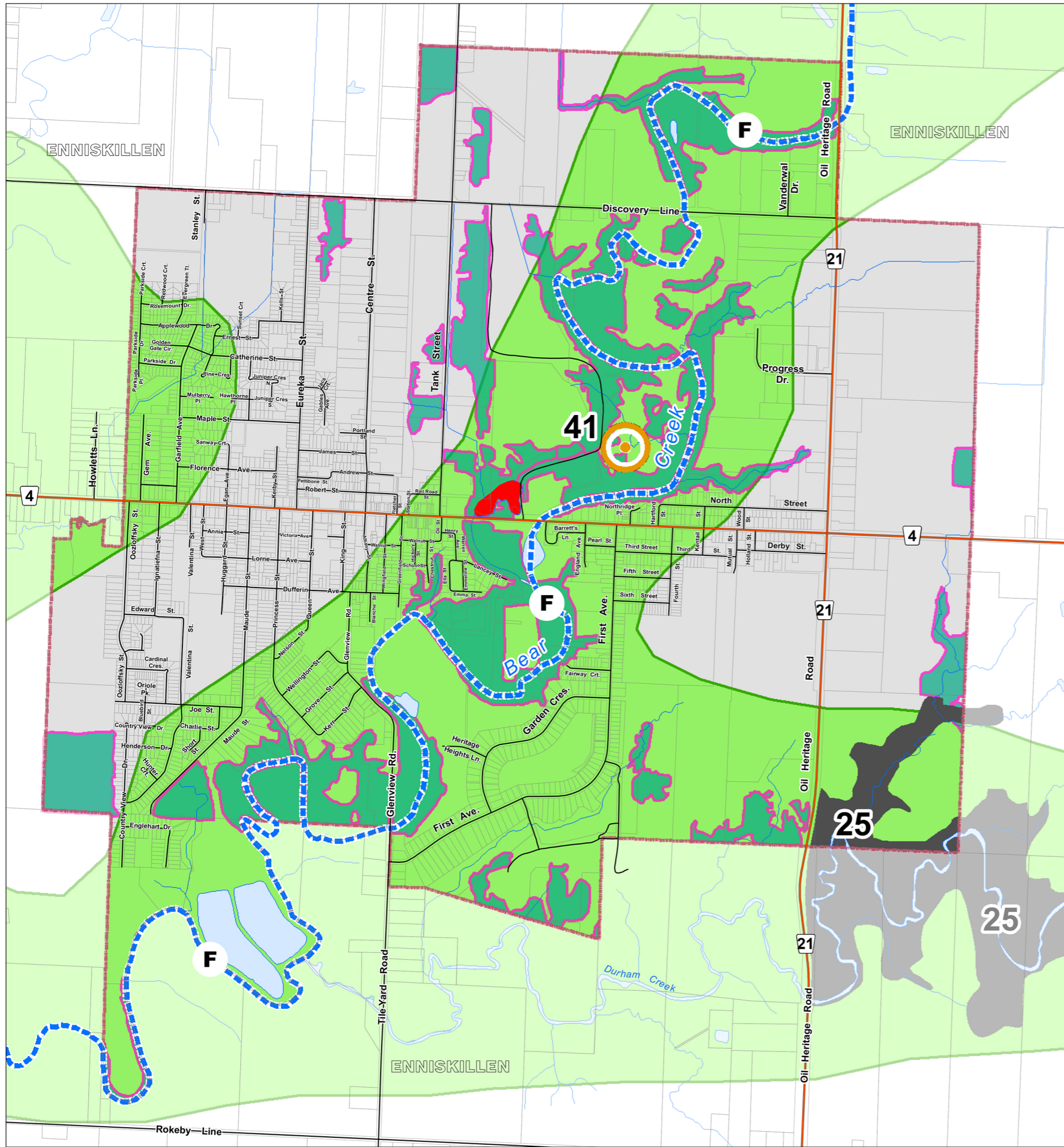
Rick Charlebois, CAO/Treasurer

Official Plan Amendments

XX



Town of Petrolia OFFICIAL PLAN SCHEDULE "C" Natural Heritage



LEGEND

- | | |
|-----------------------------|--------------------|
| Assessment Parcels | Waterbodies |
| Rivers - Streams - Drainage | Municipal Boundary |
| Roads | County Roads |
-
- | | |
|---|---|
| Lambton County Official Plan - Extract | Local Official Plan |
| <ul style="list-style-type: none"> Refer to "Chapter 8" and Map 2 - Natural Heritage System from the Lambton County Official Plan. Core Area - Feature Inventory Identifier Feature Inventory Identifier (Generalized) Cross Municipal - Feature Inventory Identifier Conservation Area / Habitat Management Area (HMA) Identifier Group "A" Features (Provincially, Locally Significant Wetlands (PSW, LSW)) Group "B" Features (ANSI, LS, ESA, SAA, CGP, CC, WA, PC) Primary Corridor (Group "C" Feature) Cross Municipal Corridor Feature | <ul style="list-style-type: none"> Significant Wetland Significant Woodland |

Reference

Disclaimer: These digital mapping products have been produced on the County of Lambton's Geographic Information System. Data provided herein is derived from sources with varying levels of accuracy and currency. This is not a survey product. The County of Lambton disclaims all responsibility for the accuracy or completeness of information contained herein. The County of Lambton assumes no responsibility for errors arising from use of these digital mapping products.

The Official Plan information contained herein is current as of the last recorded amendment noted under "Official Plan Amendments".

- Cadastral database is current to November 2022.
- Wetlands database is current to November 2022 (MNR).

Projection: UTM NAD 83 Zone 17

Consultant: NPG Planning Solutions, April 2023.

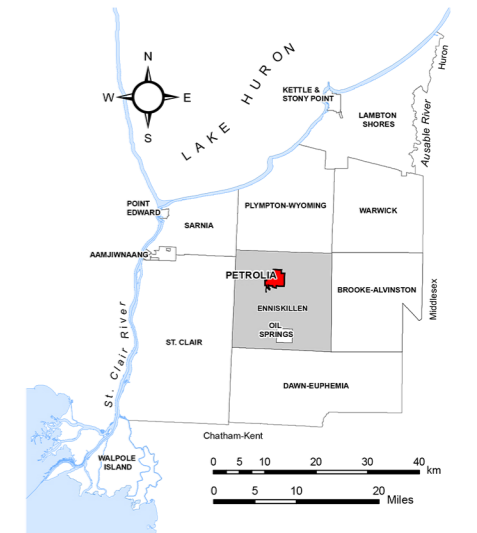
COUNTY OF LAMBTON
Planning and Development Services, April 2023.

www.lambtononline.ca

Area Estimator

3.5 Acres	28.76 m ²	1.32 Acres
1.25 Acres	10.12 m ²	1.25 Acres

Notes: Area measures shown at left are typical of Concession/Lot arrangements in the Town of Petrolia. Acre area measures can be converted to hectares (ha) by dividing by (2.471).



Town of Petrolia OFFICIAL PLAN SCHEDULE "C" Natural Heritage

to By-law No. 35 of 2023

Passed this 11 day of September, 2023

R. Brad Loosley, Mayor

Rick Charlebois, CAO/Treasurer

Official Plan Amendments

XX

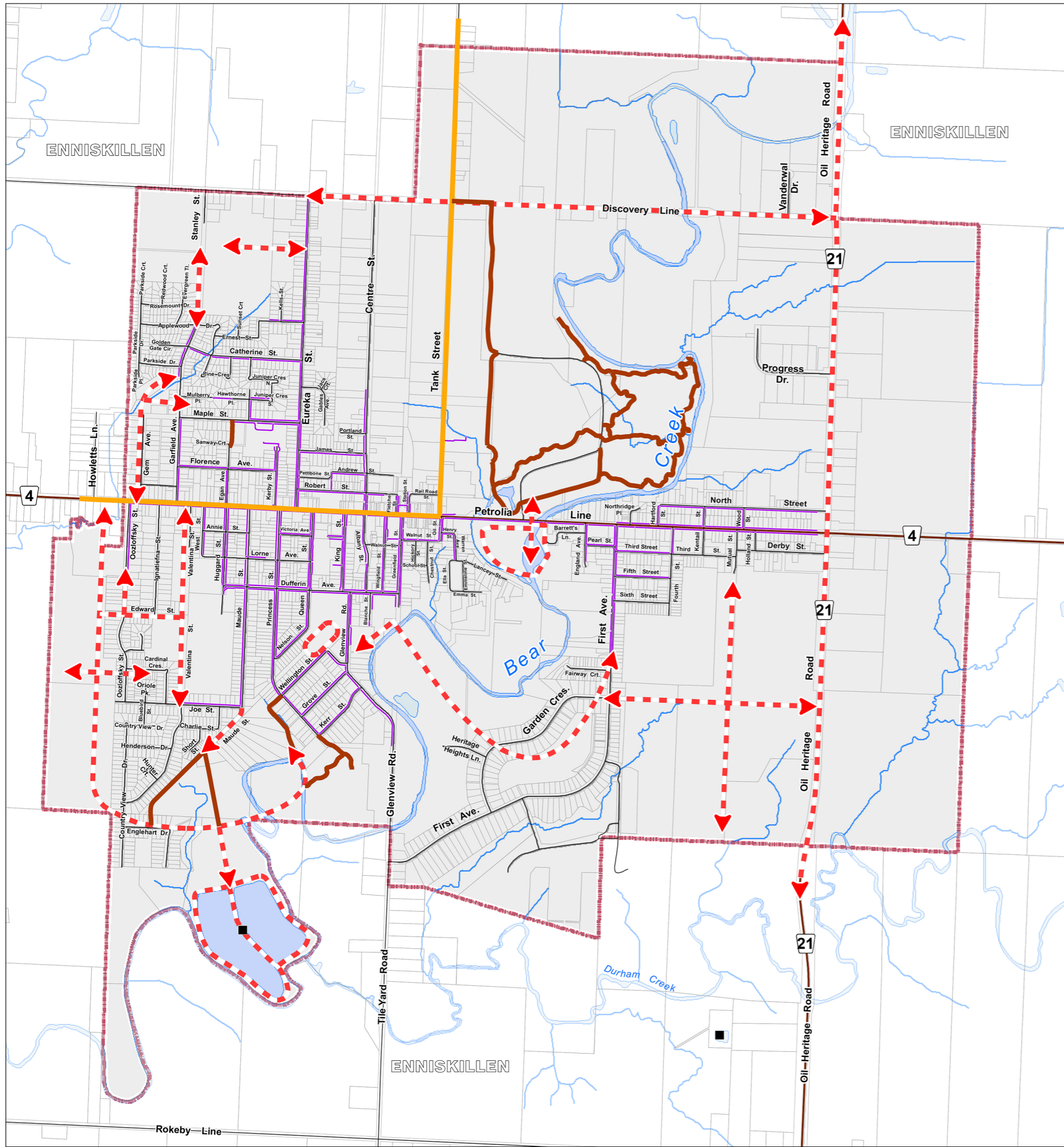


Town of Petrolia

OFFICIAL PLAN

APPENDIX 1

Proposed Conceptual Trail Network



LEGEND

- Assessment Parcels
- Rivers - Streams - Drainage
- Roads
- County Roads
- Municipal Boundary
- Waterbodies
- Sewage Treatment Works

Thematic Legend

Proposed Conceptual Trail Network

- Conceptual Trail Routes
- Lambton County Regional Trail System
- Recreational Trails
- Sidewalks

Reference

Disclaimer: These digital mapping products have been produced on the County of Lambton's Geographic Information System. Data provided herein is derived from sources with varying levels of accuracy and currency. This is not a survey product. The County of Lambton disclaims all responsibility for the accuracy or completeness of information contained herein. The County of Lambton assumes no responsibility for errors arising from use of these digital mapping products.

The Official Plan information contained herein is current as of the last recorded amendment noted under "Official Plan Amendments".

- Cadastral database is current to November 2022.
- Proposed Conceptual Trail Network.

mbpc - Monteith-Brown Planning Consultants - Town of Petrolia Parks and Recreation Master Plan - September 2020 Figure 15.

Projection: UTM NAD 83 Zone 17

Consultant: NPG Planning Solutions, April 2023.

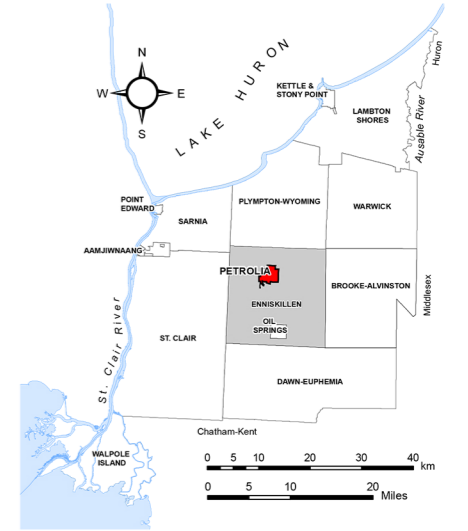
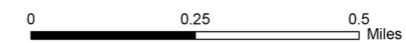
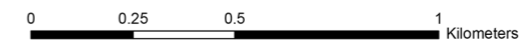
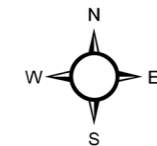
COUNTY OF LAMBTON
Planning and Development Services, April 2023.

www.lambtononline.ca

Area Estimator

2.5 Acres	1.25 Acres	1.25 Acres
1.25 Acres	1.25 Acres	1.25 Acres

Notes: Area measures shown at left are typical of Concession/Lot arrangements in the Town of Petrolia. Acre area measures can be converted to hectares (ha) by dividing by (2.471).



Town of Petrolia

OFFICIAL PLAN

APPENDIX 1

Proposed Conceptual Trail Network

to By-law No. 35 of 2023

Passed this 11 day of September, 2023

R. Brad Loosley, Mayor

Rick Charlebois, CAO/Treasurer

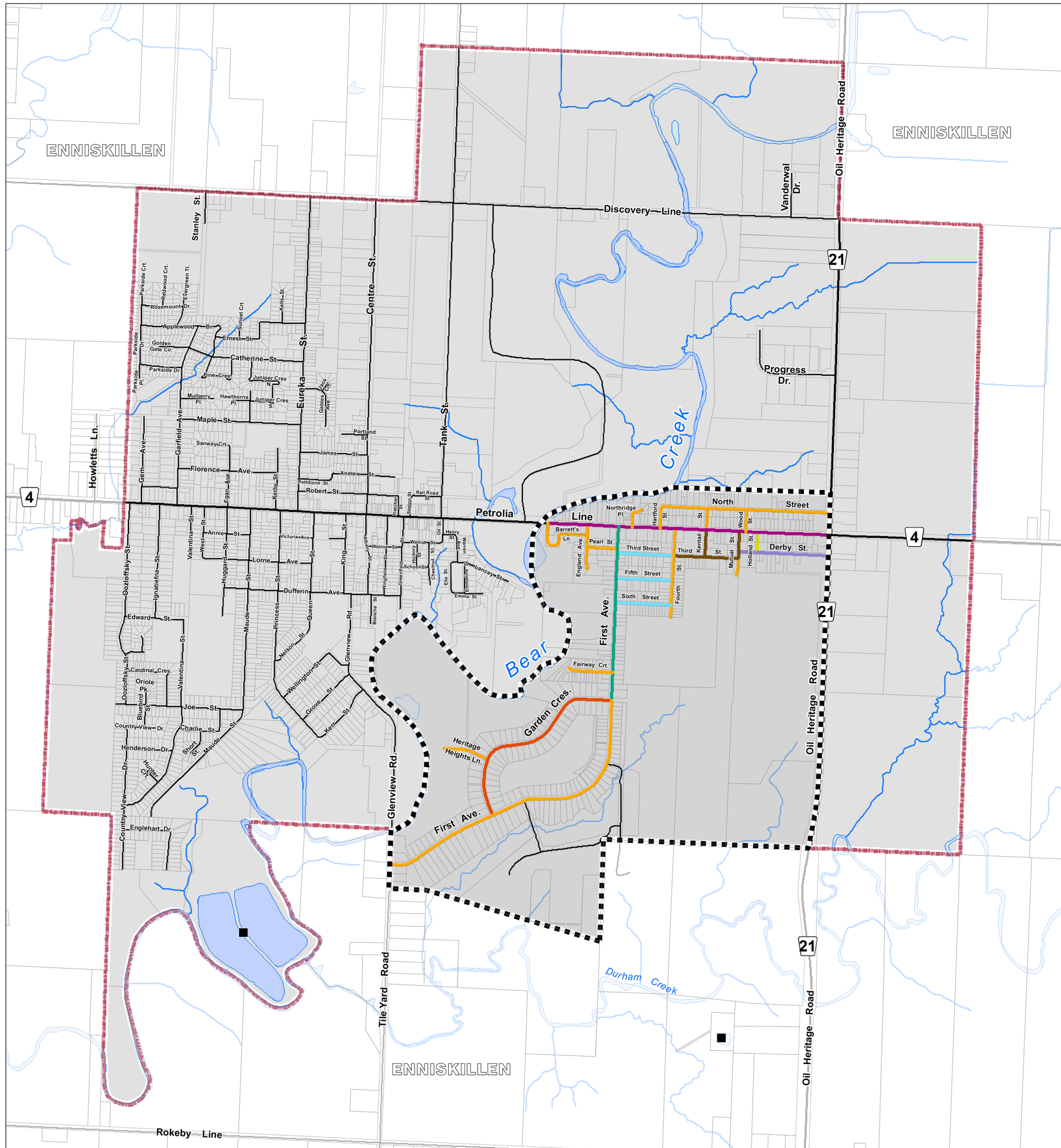
Appendix Amendments

xx



Town of Petrolia OFFICIAL PLAN APPENDIX 2

Proposed Storm Drainage Phasing



LEGEND

- Assessment Parcels
- Rivers - Streams - Drainage
- Roads
- County Roads
- Municipal Boundary
- Waterbodies
- Sewage Treatment Works

Thematic Legend

Proposed Storm Drainage Phasing Plan - Existing Developed Areas within the Southeast Service Area

RECONSTRUCTION PRIORITIES

- 1) Third Street; Fourth Street to Mutual Street
Kentail Street; Third Street to Petrolia Line
Mutual Street; Third Street to Petrolia Line
- 2) Derby Street; Mutual Street to Oil Heritage Road
- 3) Holland Street; Petrolia Line to Derby Street
- 4) First Ave.; Petrolia Line to Garden Crescent
- 5) Third, Fifth and Sixth Street(s); First Ave. to Fourth Street
- 6) Petrolia Line; Oil Heritage Road to Barrett's Lane
- 7) Garden Crescent; First Ave. to First Ave.
- 8) Remaining Streets within the Developed Area
- Southeast Service Area

Reference

Disclaimer: These digital mapping products have been produced on the County of Lambton's Geographic Information System. Data provided herein is derived from sources with varying levels of accuracy and currency. This is not a survey product. The County of Lambton disclaims all responsibility for the accuracy or completeness of information contained herein. The County of Lambton assumes no responsibility for errors arising from use of these digital mapping products.

The Official Plan information contained herein is current as of the last recorded amendment noted under "Official Plan Amendments".

- Cadastral database is current to November 2022.
- Proposed Storm Drainage Phasing Plan - Existing Developed Areas.
- BM Ross - Municipal Class Environmental Assessment Stormwater Master Plan Servicing Study - Reconstruction Priorities Figure No. 5.1 - June 2021.

Projection: UTM NAD 83 Zone 17

Consultant: NPG Planning Solutions, April 2023.

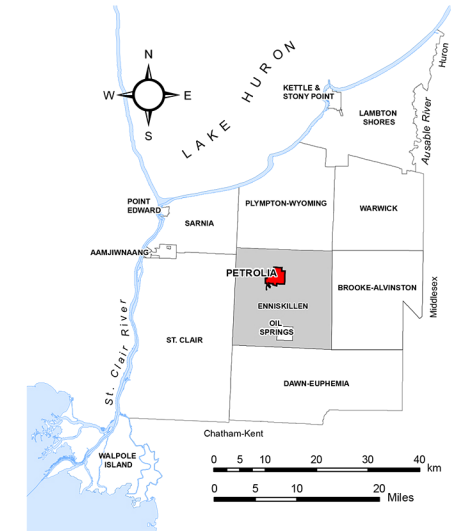
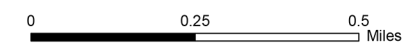
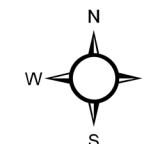
COUNTY OF LAMBTON
Planning and Development Services, April 2023.

www.lambtononline.ca

Area Estimator

2.5 Acres	12.7 Acres	12.7 Acres
1.25 Acres	1.25 Acres	1.25 Acres

Notes: Area measures shown at left are typical of Concession/Lot arrangements in the Town of Petrolia.
Acre area measures can be converted to hectares (ha) by dividing by (2.471).



Town of Petrolia OFFICIAL PLAN APPENDIX 2 Proposed Storm Drainage Phasing

to By-law No. 35 of 2023

Passed this 11 day of September, 2023

R. Brad Loosley, Mayor

Rick Charlebois, CAO/Treasurer

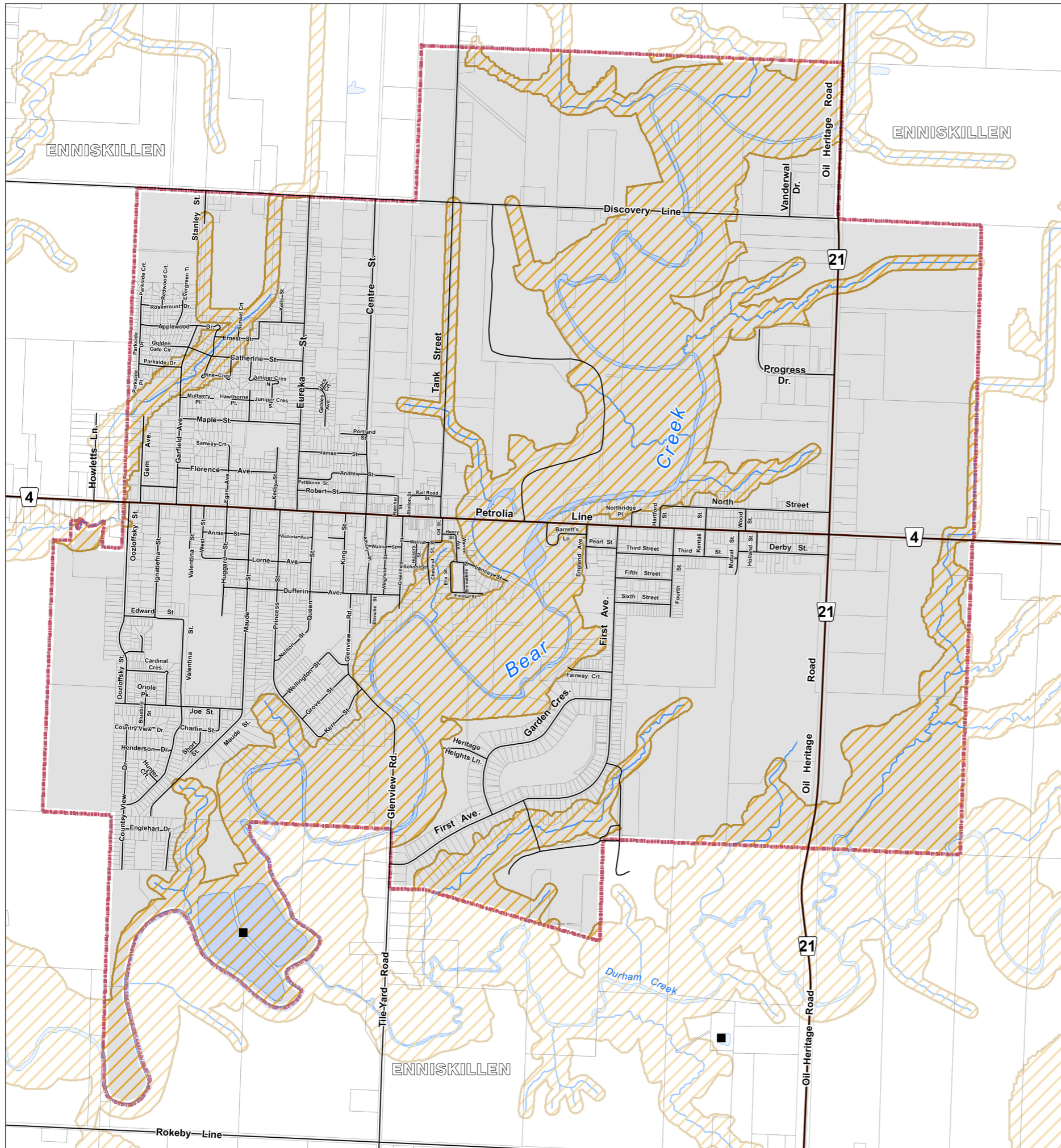
Appendix Amendments

XX



Town of Petrolia OFFICIAL PLAN APPENDIX 3

Conservation Authority Regulated Areas

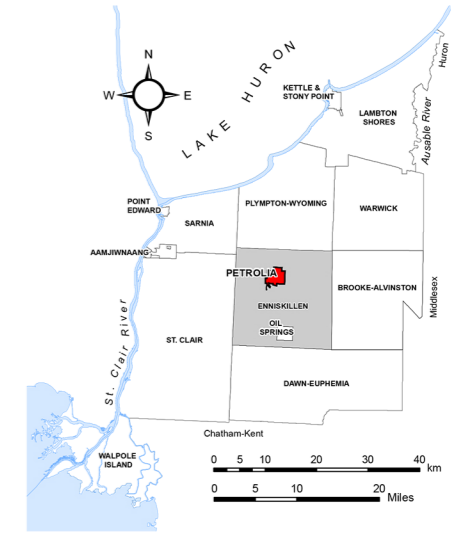


LEGEND

- Assessment Parcels
- Waterbodies
- Rivers - Streams - Drainage
- Sewage Treatment Works
- Roads
- County Roads
- Municipal Boundary

Thematic Legend

- Areas Affected by Regulation (Conservation Authority Regulation 171/06)



Reference

Disclaimer: These digital mapping products have been produced on the County of Lambton's Geographic Information System. Data provided herein is derived from sources with varying levels of accuracy and currency. This is not a survey product. The County of Lambton disclaims all responsibility for the accuracy or completeness of information contained herein. The County of Lambton assumes no responsibility for errors arising from use of these digital mapping products.

The Official Plan information contained herein is current as of the last recorded amendment noted under "Official Plan Amendments".

- Cadastral database is current to November 2022.

Projection: UTM NAD 83 Zone 17

Consultant: NPG Planning Solutions, April 2023.

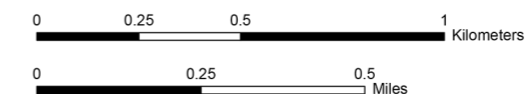
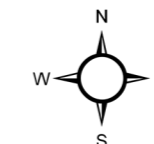
COUNTY OF LAMBTON
Planning and Development Services, April 2023.

www.lambtononline.ca

Area Estimator

2.5 Acres	12 Acres	12 Acres
1.25 Acres	6 Acres	6 Acres
1.25 Acres	6 Acres	6 Acres

Notes: Area measures shown at left are typical of Concession/Lot arrangements in the Town of Petrolia. Acre area measures can be converted to hectares (ha) by dividing by (2.471).



Town of Petrolia OFFICIAL PLAN APPENDIX 3 Conservation Authority Regulated Areas

to By-law No. 35 of 2023

Passed this 11 day of September, 2023

R. Brad Loosley, Mayor

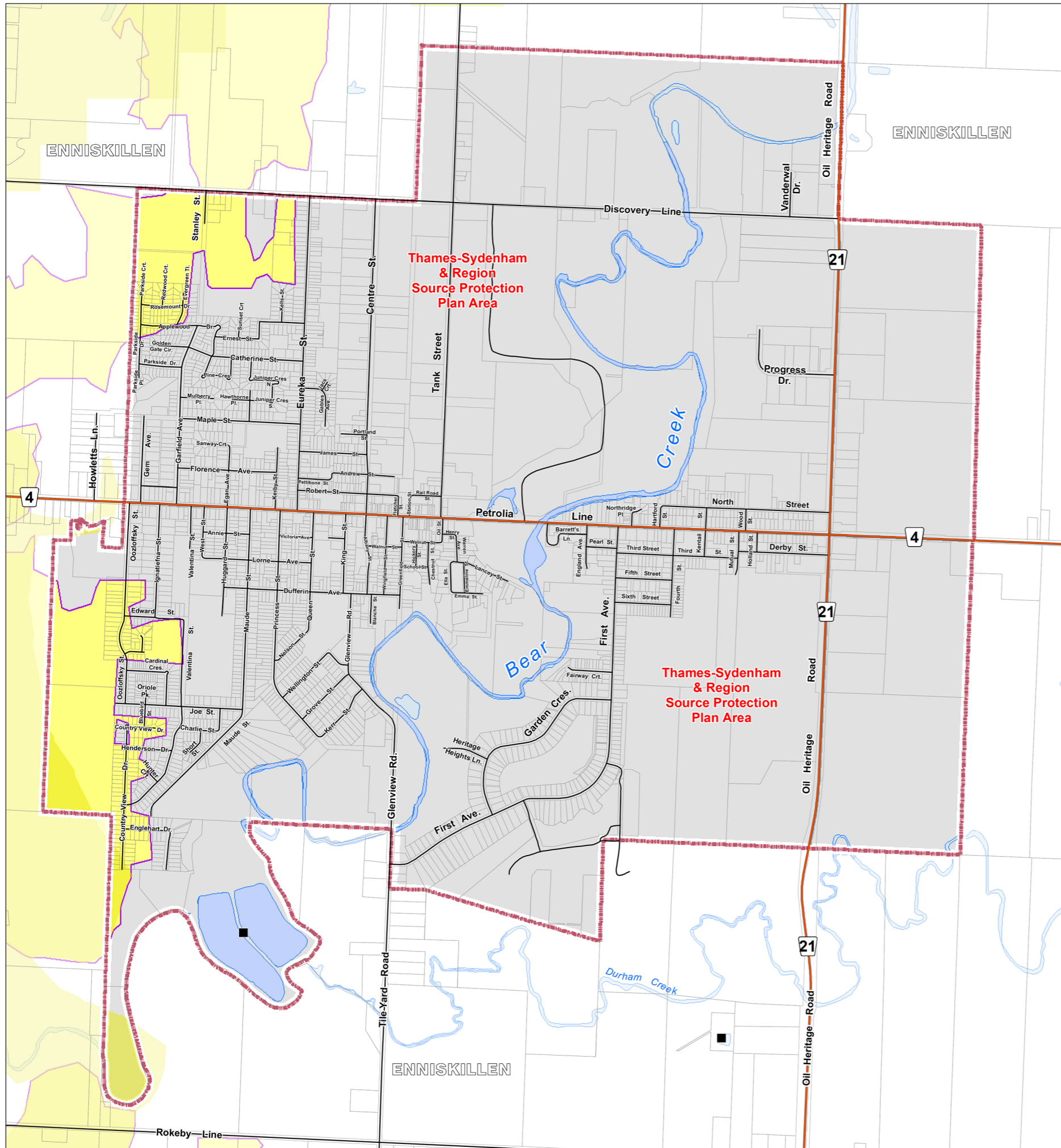
Rick Charlebois, CAO/Treasurer

Appendix Amendments

XX



Town of Petrolia OFFICIAL PLAN APPENDIX 4 Source Protection Plans



LEGEND

- Assessment Parcels
- Rivers - Streams - Drainage
- Roads
- County Roads
- Municipal Boundary
- Waterbodies
- Sewage Treatment Works

Thematic Legend

Areas of LOW to MODERATE Drinking Water Threat :

- HVA - (Highly Vulnerable Aquifers)
- SGRA - (Significant Groundwater Recharge Area)

NOTE: This Appendix does not form part of this Plan and is provided for information purposes only.

Reference

Disclaimer: These digital mapping products have been produced on the County of Lambton's Geographic Information System. Data provided herein is derived from sources with varying levels of accuracy and currency. This is not a survey product. The County of Lambton disclaims all responsibility for the accuracy or completeness of information contained herein. The County of Lambton assumes no responsibility for errors arising from use of these digital mapping products.

The Official Plan information contained herein is current as of the last recorded amendment noted under "Official Plan Amendments".

NOTE: This Appendix does not form part of this Plan and is provided for information purposes only.

- Cadastral database is current to November 2022.

Projection: UTM NAD 83 Zone 17

Consultant: NPG Planning Solutions, April 2023.

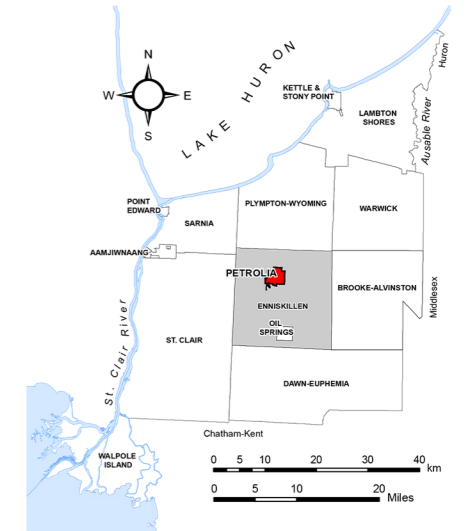
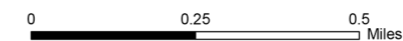
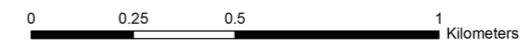
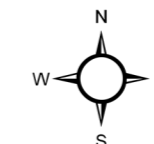
COUNTY OF LAMBTON
Planning and Development Services, April 2023.

www.lambtononline.ca

Area Estimator

2.5 Acres	1.25 Acres	1.25 Acres
1.25 Acres	1.25 Acres	1.25 Acres

Notes: Area measures shown at left are typical of Concession/Lot arrangements in the Town of Petrolia. Acre area measures can be converted to hectares (ha) by dividing by (2.471).



Town of Petrolia OFFICIAL PLAN APPENDIX 4 Source Protection Plans

to By-law No. 35 of 2023

Passed this 11 day of September, 2023

R. Brad Loosley, Mayor

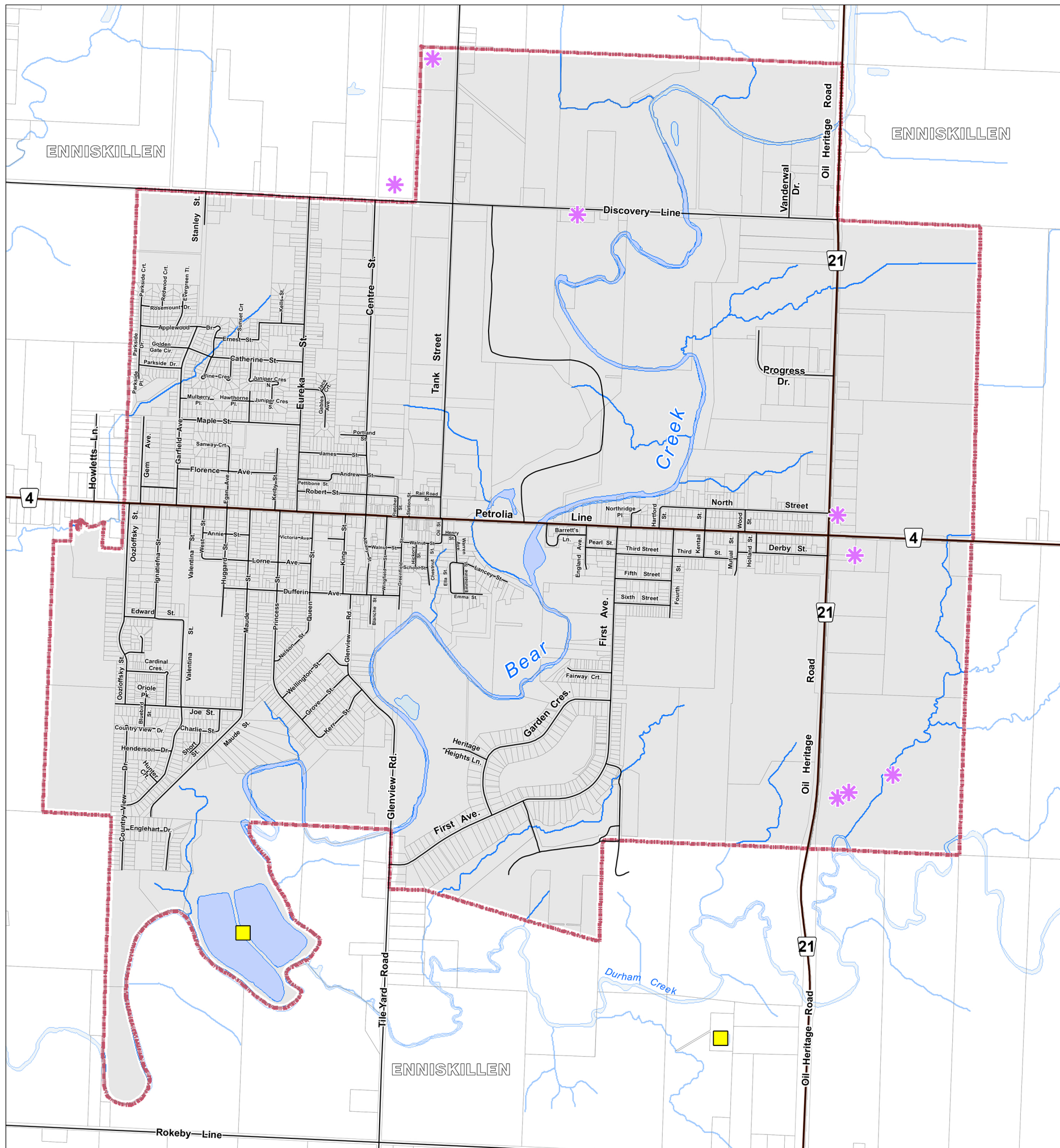
Rick Charlebois, CAO/Treasurer

Appendix Amendments

XX



Town of Petrolia OFFICIAL PLAN APPENDIX 5 Waste Disposal Sites



LEGEND

- Assessment Parcels
- Rivers - Streams - Drainage
- Roads
- County Roads
- Municipal Boundary
- Waterbodies
- Sewage Treatment Works

Thematic Legend

- Sewage Treatment Works
- Former Waste Disposal Site (Anderson Dataset: Lambton GWS 2004)

Data is drawn from the Lambton Groundwater Study December 2004. Project No. 03-2434
Dillon Consulting Limited in Association with Golder Associates Ltd.
Anderson Waste Sites - Map(s) 6.1, 6.2.

Reference

Disclaimer: These digital mapping products have been produced on the County of Lambton's Geographic Information System. Data provided herein is derived from sources with varying levels of accuracy and currency. This is not a survey product. The County of Lambton disclaims all responsibility for the accuracy or completeness of information contained herein. The County of Lambton assumes no responsibility for errors arising from use of these digital mapping products.

The Official Plan information contained herein is current as of the last recorded amendment noted under "Official Plan Amendments".

NOTE: This Appendix does not form part of this Plan and is provided for information purposes only.

- Cadastral database is current to November 2022.

Projection: UTM NAD 83 Zone 17

Consultant: NPG Planning Solutions, April 2023.

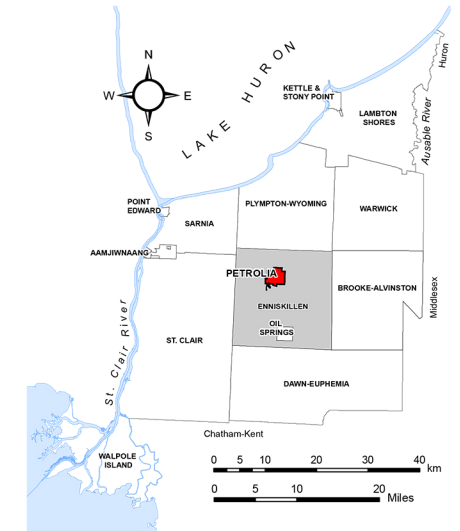
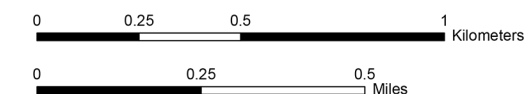
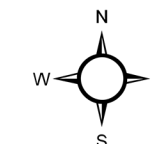
COUNTY OF LAMBTON
Planning and Development Services, April 2023.

www.lambtononline.ca

Area Estimator

2.5 Acres	12.7 Acres	13.7 Acres
1.25 Acres	6.35 Acres	6.85 Acres
0.625 Acres	3.175 Acres	3.425 Acres

Notes: Area measures shown at left are typical of Concession/Lot arrangements in the Town of Petrolia.
Acre area measures can be converted to hectares (ha) by dividing by (2.471).



Town of Petrolia OFFICIAL PLAN APPENDIX 5 Waste Disposal Sites

to By-law No. 35 of 2023

Passed this 11 day of September, 2023

R. Brad Loosley, Mayor

Rick Charlebois, CAO/Treasurer

Appendix Amendments

XX

