



**MINUTES**  
**Public Information Meeting -General Meeting**  
**June 27, 2022 Council Chambers, Victoria Hall 6:00 PM**

**COUNCIL PRESENT:**

Councillor - Joel Field  
Councillor - Marty Souch  
Councillor - Don Welten  
Mayor - Brad Loosley

**COUNCIL ABSENT:**

Councillor - Ross O'Hara  
Councillor - Wade Deighton  
Councillor - Grant Purdy

**STAFF PRESENT:**

Rob Nesbitt ,Senior Planner  
Rick Charlebois ,Chief Administrative Officer/Treasurer  
Laurissa Ellsworth ,Director of Marketing, Arts & Communications  
Mandi Pearson ,Clerk/Operations Clerk  
Mike Thompson ,Director of Operations  
Dave Menzies ,Director of Facilities & Community Services

**STAFF ABSENT:**

Jay Arns, Director of Public Safety/Fire Chief & CEMC

**MEDIA PRESENT:**

The Independent

Page

**1 PURPOSE OF MEETING**

Mayor Loosley opened the meeting at 6:00 pm.

*The purpose of this meeting, is to afford the public an opportunity to receive a presentation of information and provide feedback to BM Ross, Council and Staff relating to the Town of Petrolia Pedestrian Connectivity Study currently underway.*

**2 INTRODUCTION OF COUNCIL AND STAFF PRESENT**

- a) Mayor Loosley introduced members of Council.
- b) Mandi Pearson, Clerk/Operations Clerk introduced staff in attendance.

### 3 PROJECT PRESENTATION

- a) Jordan Fohkens of BM Ross made a presentation.  
[June 27 2022 - Open House Presentation - Petrolia Sidewalk Study](#)

4 - 19

### 4 PUBLIC INPUT

- a) Received at the Clerks Department

- None

- b) Public in Attendance

1. Karen App  
4046 Englehart Drive

- Fairbank Memorial Park, not on map
- the walkway through to Joe Street, has some concerns

2. Donna Clermont  
North Street

- concern from North to Derby Street, lack of sidewalk along Oil Heritage, essential place to have sidewalk
- great to look at what's missing and link these together
- Tileyard is also missing sidewalk connectivity and regularly walked, possible to have a separate pedestrian bridge to connect

3. Bill App  
4046 Englehart

- in the past developers have not had to share in responsibility or connection of sidewalks, in these areas where you are required to walk on the road in these areas the speed limit is 50KM, this is a concern.
- walking path to Fairbank Park should be included
- results from the study should be actioned

4. Allison Mevis  
Fourth Street

- would it be possible to include mapping the street lights at the same time as this study?

5. Dave Hext  
4042 Petrolia Line

- excellent that this is being addressed and looked into.
- would like to have this also seen through a childs eyes and how they walk our sidewalks for safety.

c) Staff

- None

d) Council

- None

## 5 CLOSE OF MEETING

The public are invited after the formal presentation to join BM Ross in the lobby area to view detailed boards in relation to this project.

Mayor Loosley closed the meeting at 6:31 pm

---

CAO

---

Mayor

# Pedestrian Connectivity Study

Town of Petrolia  
Presentation by BM Ross and Associates



# Background

- **Community Wellbeing Master Plan**
  - Recommendations for sidewalk location and widths
  - Recommendations for updated standards
- **Official Plan Amendments**
  - updated sidewalk connectivity policies
  - New developments and to improve existing areas
- **Pedestrian Connectivity Study**
  - Inventory of Sidewalks (location, width, condition)
  - Review of OP policies
  - Comparison between existing network and updated OP policies
  - Prioritize improvements



# Sidewalk Connectivity Study

## Data Gathering

Late 2021 to Early 2022

## Data Analysis

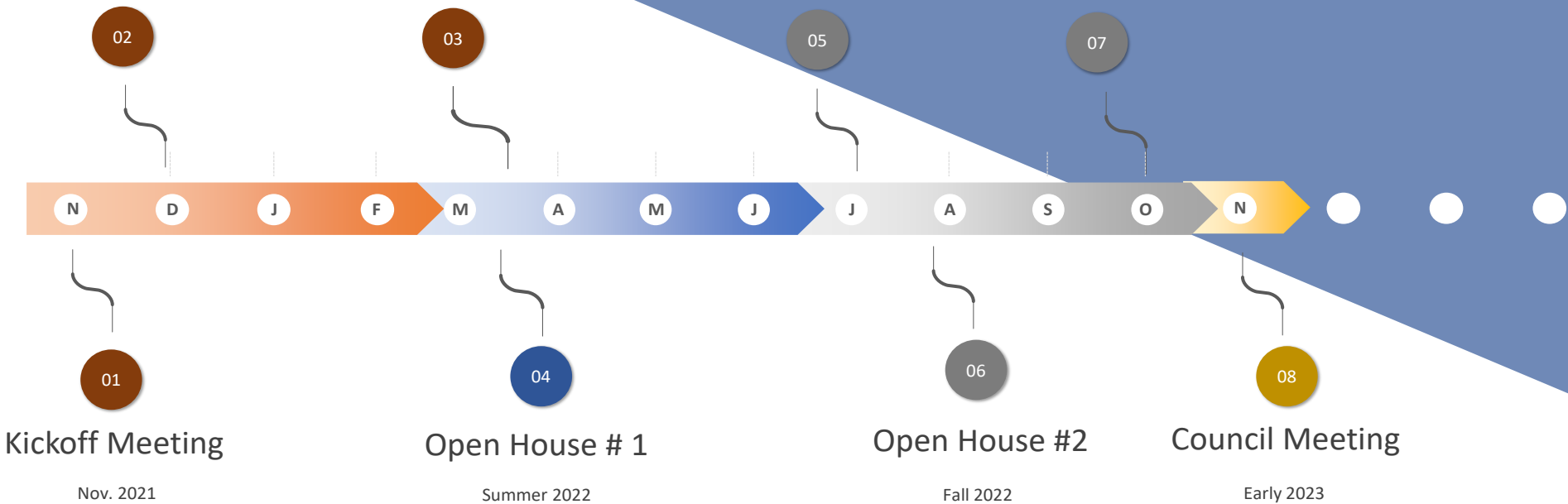
Early 2022

## Draft Report

Summer / Fall 2022

## Final Report

Late 2022 / Early 2023



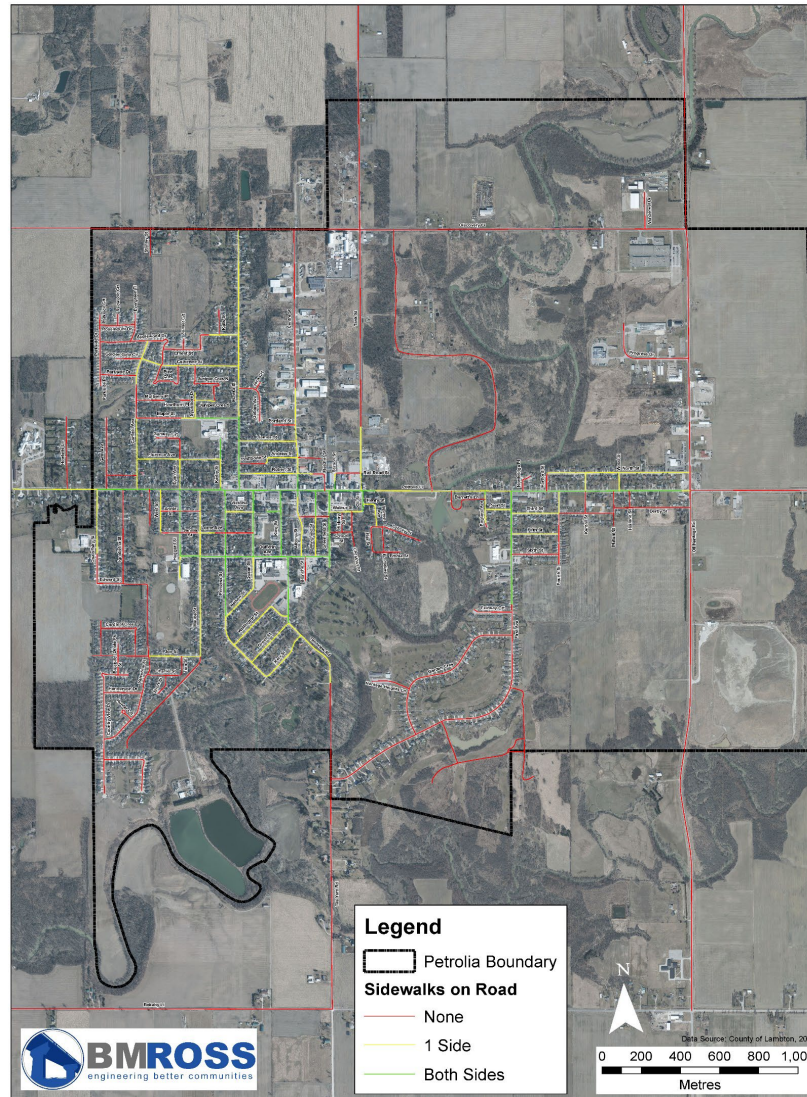
# Analysis

- Location
  - Where are they?
  - Where should they be?
  - Where are they most important?
- Width
  - How wide are they?
  - How wide should they be?
  - Where should they be widest?
- Hazards (grinding, cracking, lifting, etc.)
- Condition
- Park and Recreation Master Plan (trail connections)
- Community Well-Being Master Plan (enhanced streetscapes)

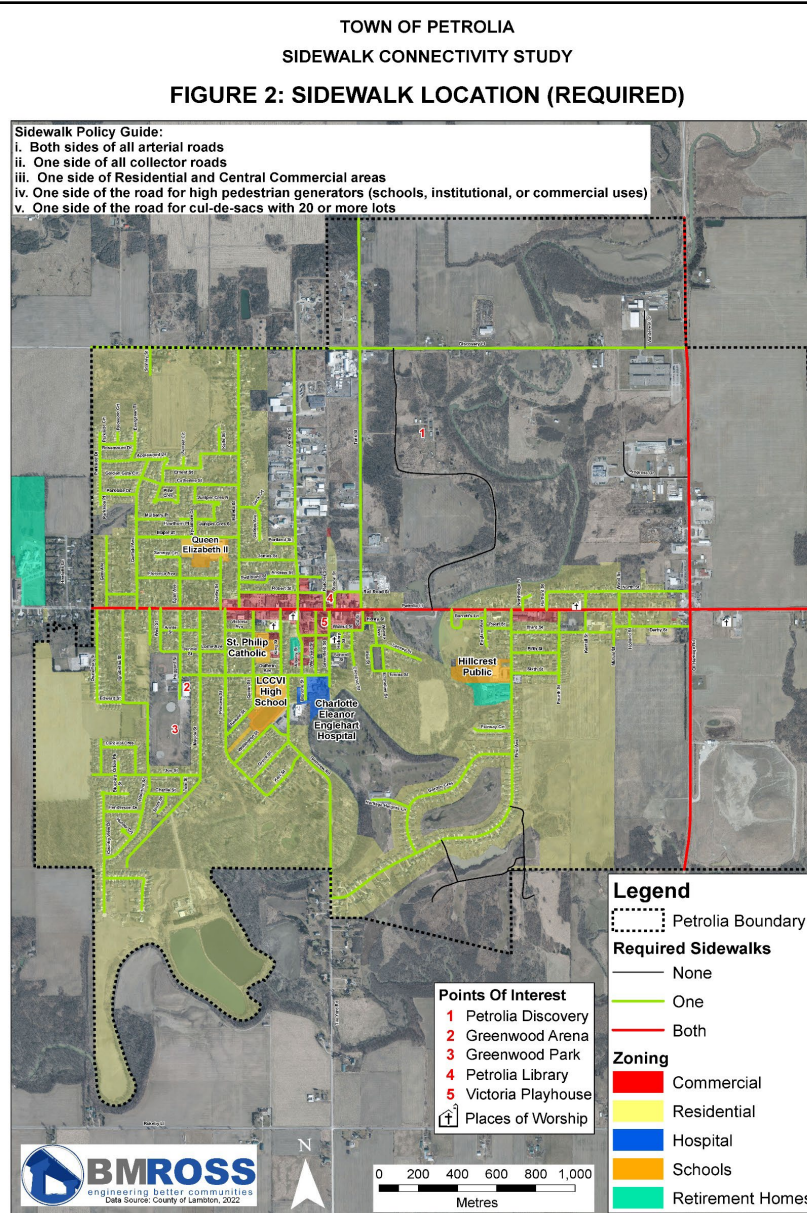
This map shows roads in Petrolia that have a sidewalk:

- on one side (yellow),
- both sides (green),
- and roads without any sidewalks (red).

TOWN OF PETROLIA  
SIDEWALK CONNECTIVITY STUDY  
**FIGURE 1: SIDEWALK LOCATION (EXISTING)**



Shows the  
Sidewalks required  
by the New Official  
Plan



## What's more important?

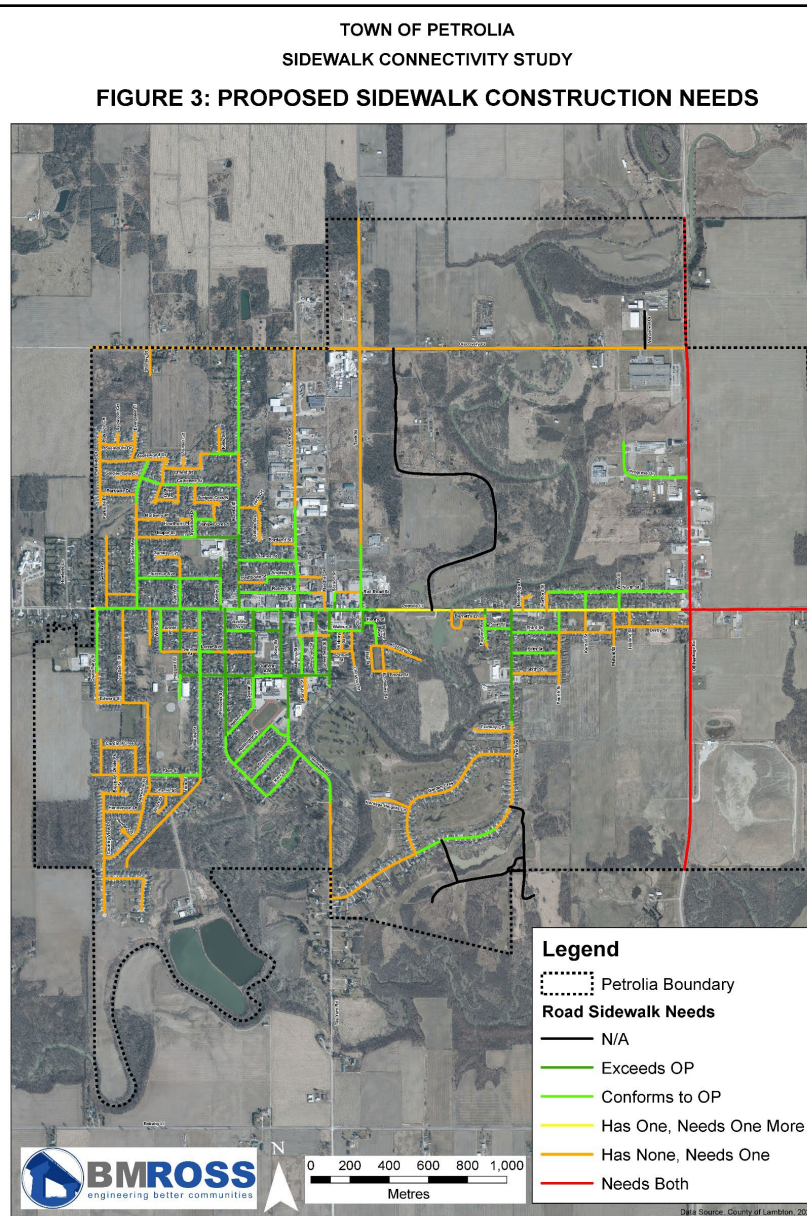
Sidewalks near:

- 1) Schools
- 2) Parks
- 3) Hospital
- 4) Commercial
- 5) Retirement Homes
- 6) Churches
- 7) Residential  
(neighbours, friends)
- 8) Other

- compares areas that have sidewalks to areas where the updated policies require them

- Areas in red, orange, and yellow require a minimum of one sidewalk.

- Areas in green conform or exceed these policy requirements

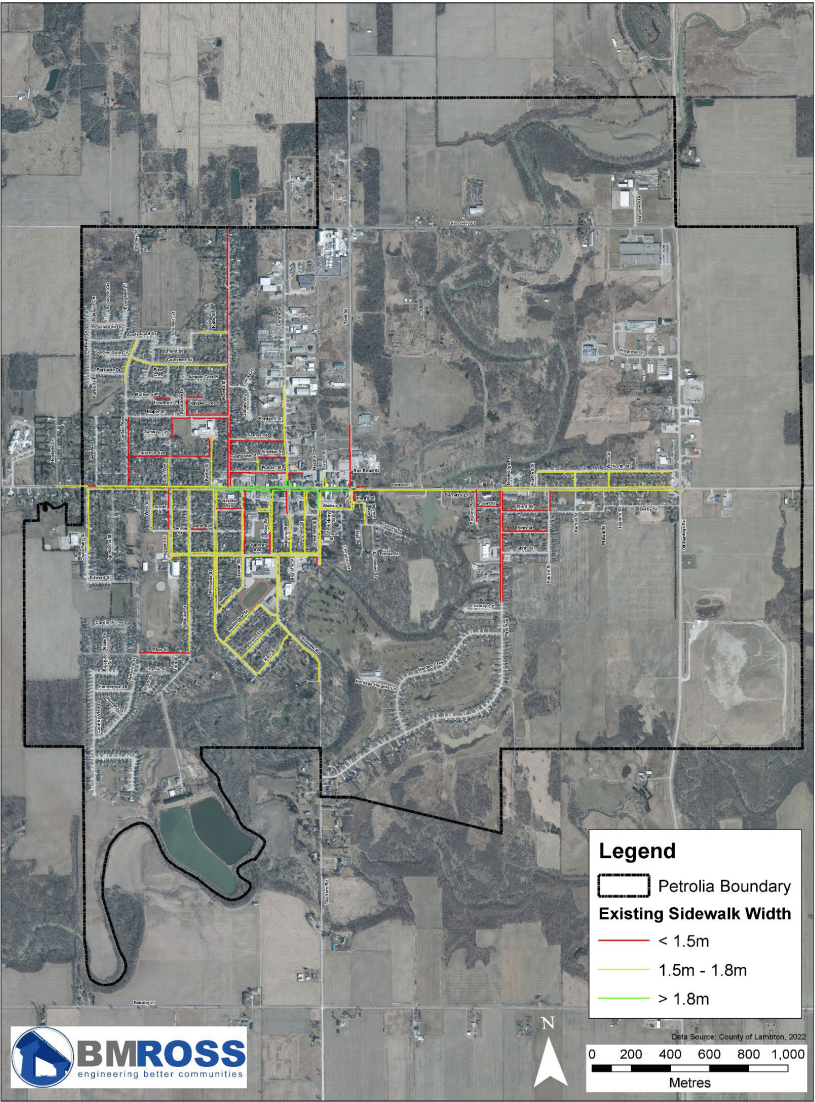


### What's more important?

- 1) One side of the road (that currently has none)
- 2) Two Sides of the road (that currently have one)
- 3) Two Sides of the road (that currently have none)

TOWN OF PETROLIA  
SIDEWALK CONNECTIVITY STUDY  
FIGURE 4: SIDEWALK WIDTH (EXISTING)

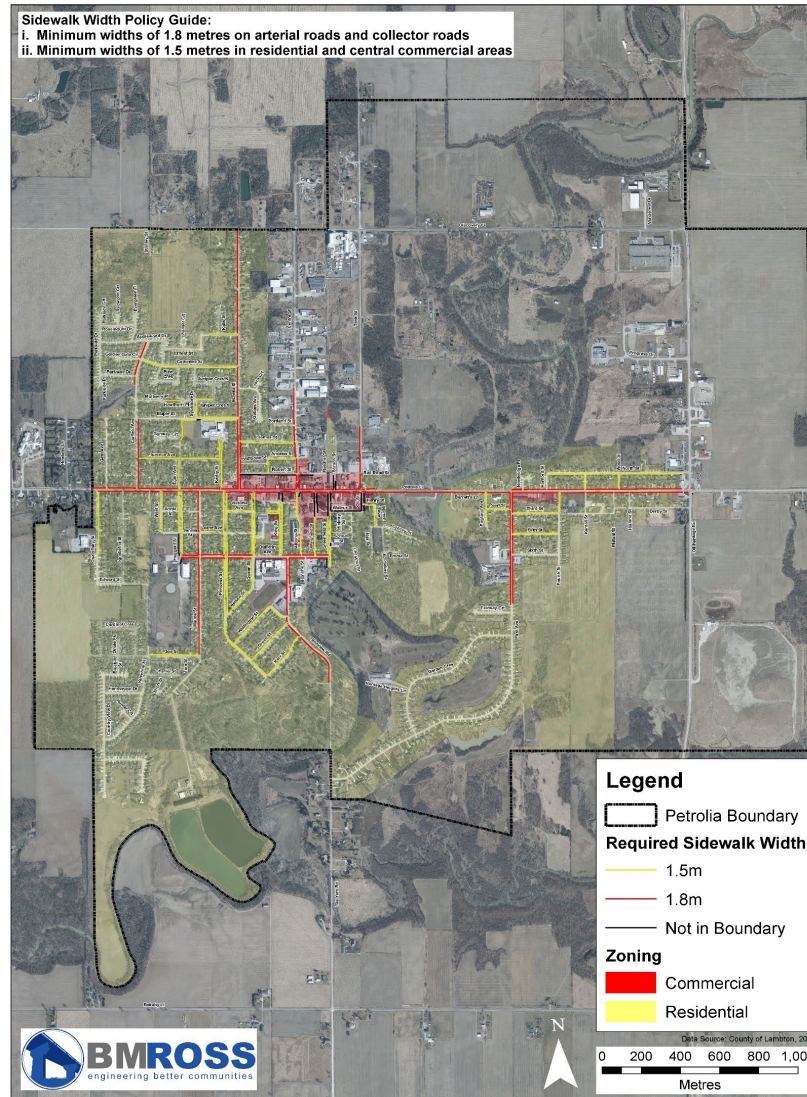
Shows the existing  
width of sidewalks



Shows the  
existing  
sidewalks and  
where the  
updated policies  
require wider  
sidewalks

TOWN OF PETROLIA  
SIDEWALK CONNECTIVITY STUDY

FIGURE 5: SIDEWALK WIDTH (REQUIRED)

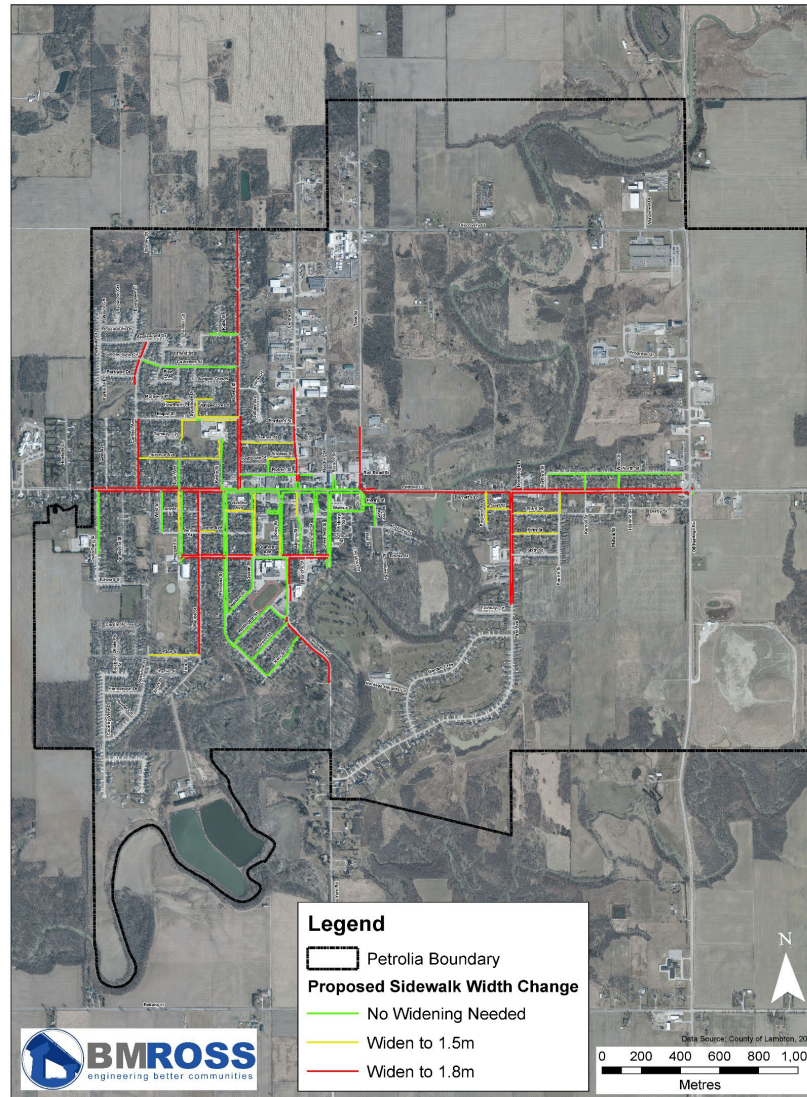


**What's more important?**

- 1) Widen sidewalks that are currently undersized
- 2) Widen sidewalks in busier areas

This map compares existing sidewalk widths to the widths required by the updated policies

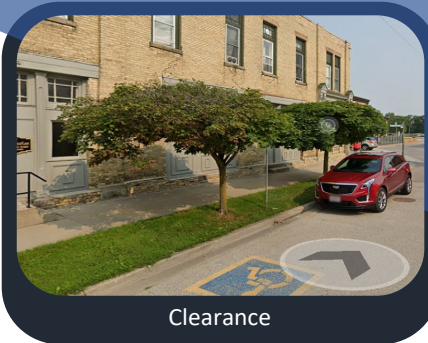
TOWN OF PETROLIA  
SIDEWALK CONNECTIVITY STUDY  
FIGURE 6: PROPOSED SIDEWALK WIDTH CHANGES



### What's more important?

Wide sidewalks near:

- 1) Major roads
- 2) Schools
- 3) Child Care Facilities
- 4) Parks
- 5) Hospital
- 6) Commercial
- 7) Retirement Homes
- 8) Churches
- 9) Residential  
(neighbours, friends)
- 10) Other



Clearance



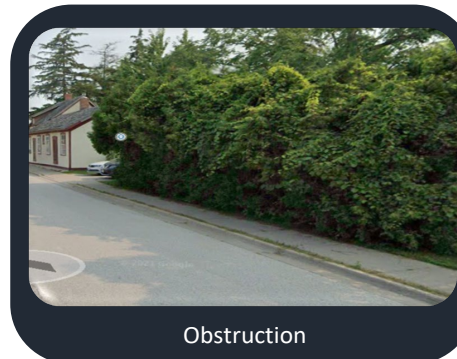
Cracking



Grinding



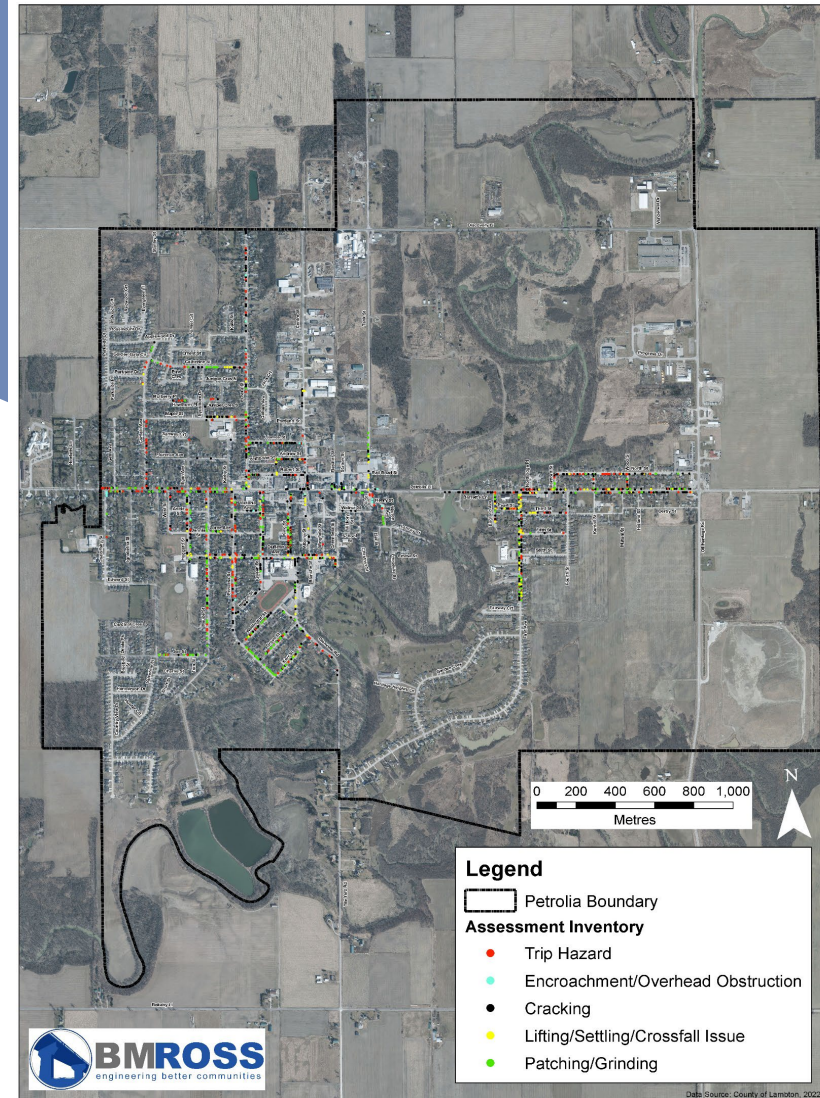
Grinding



Obstruction

This map shows the various hazards that exist on the Town's sidewalks.

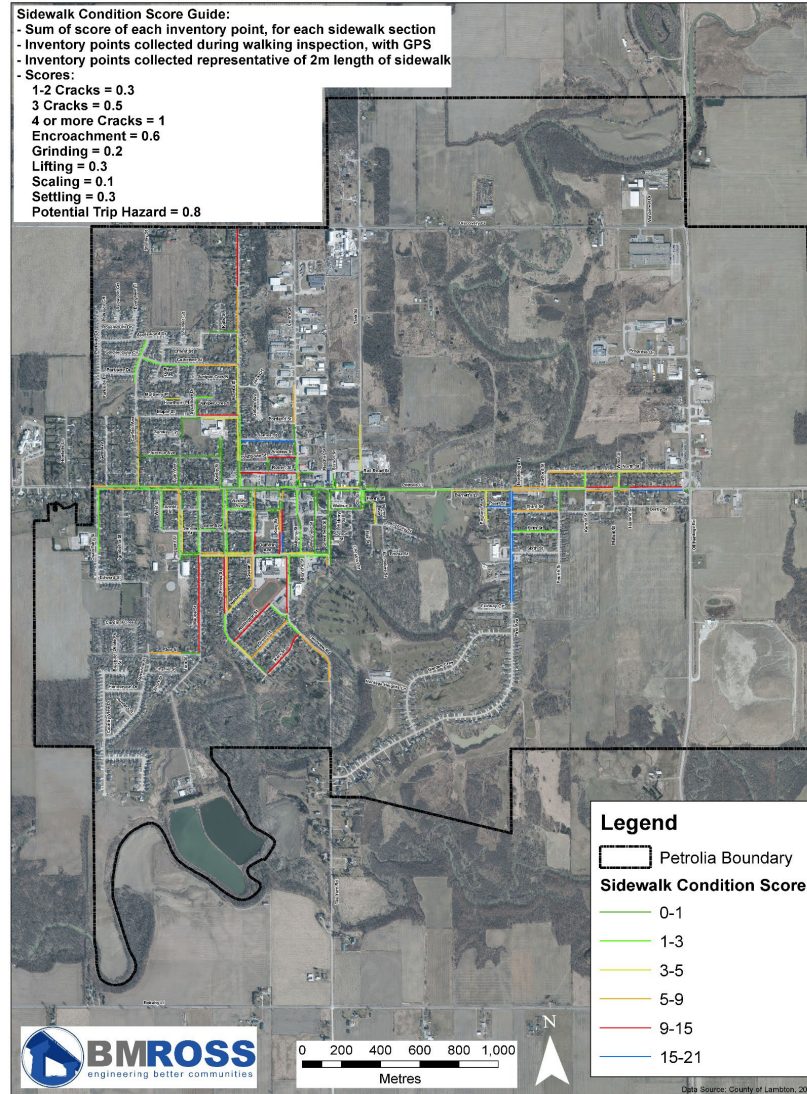
TOWN OF PETROLIA  
SIDEWALK CONNECTIVITY STUDY  
FIGURE 7: POTENTIAL SIDEWALK HAZARDS



This map shows the condition of existing sidewalks in Petrolia. The lower scores are in the best condition and are shown in green. Sidewalks that are in poor condition are shown in blue.

## TOWN OF PETROLIA SIDEWALK CONNECTIVITY STUDY

**FIGURE 8: SIDEWALK CONDITION (EXISTING)**



**Legend**

- Petrolia Boundary
- Parks
- Existing Sidewalk
- Trails**
  - Recreational Trails
  - Lambton County Regional Trail System
  - Conceptual Trail Routes

0 200 400 600 800 1,000  
Metres

BMROSS  
engineering better communities

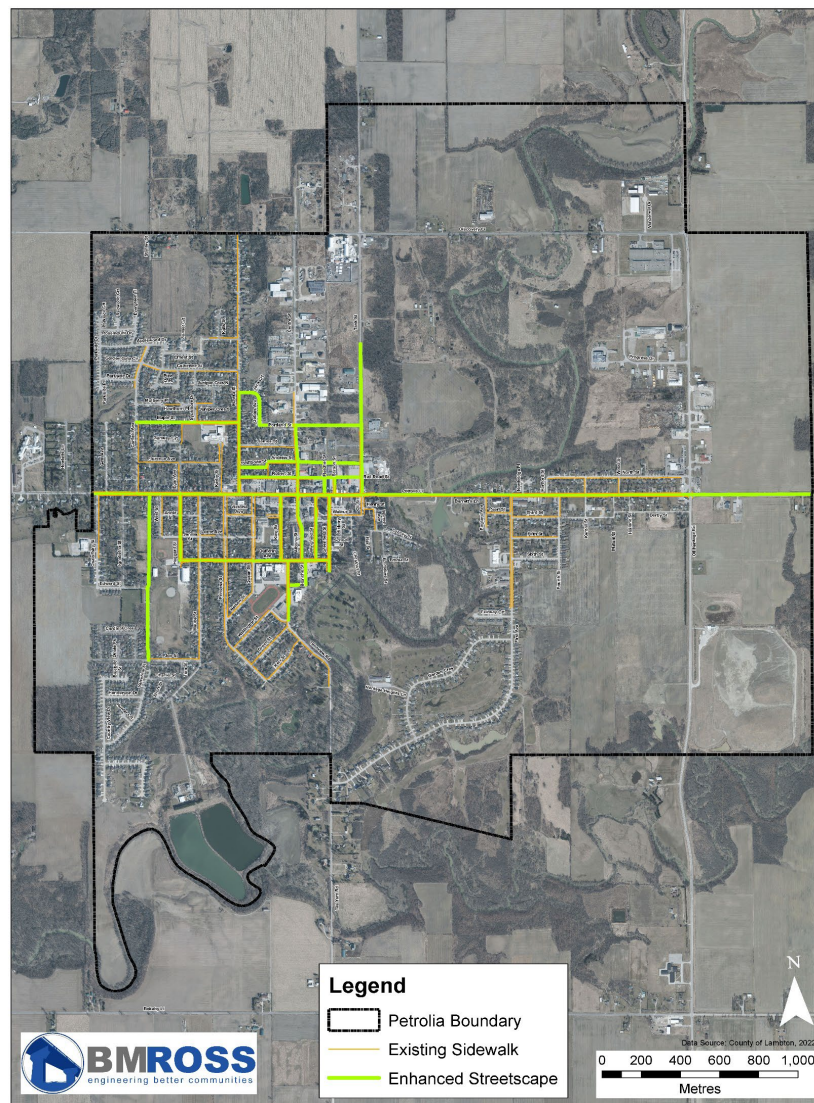
North arrow pointing up.

Scale bar: 0 to 1,000 Metres.

Map showing the Petrolia Boundary, Parks, Existing Sidewalk, and Trails. The map includes a scale bar (0 to 1,000 Metres) and a North arrow.

Shows the  
Enhanced  
Streetscapes  
in Petrolia

TOWN OF PETROLIA  
SIDEWALK CONNECTIVITY STUDY  
**FIGURE 10: SIDEWALKS (COMMUNITY WELL-BEING MASTER PLAN)**



**Where do you  
walk?**

**What's most  
important to you  
when deciding to  
walk?**

**Has anything  
prevented you  
from walking  
more?**

TOWN OF PETROLIA  
SIDEWALK CONNECTIVITY STUDY  
**FIGURE 11: STUDY AREA**



# Let us Know What You Think

- Please View the Display Boards
  - Use markers/stickers to share your thoughts
- On-line Surveys
  - Will be on Town's website
- E-mail / Call Me