

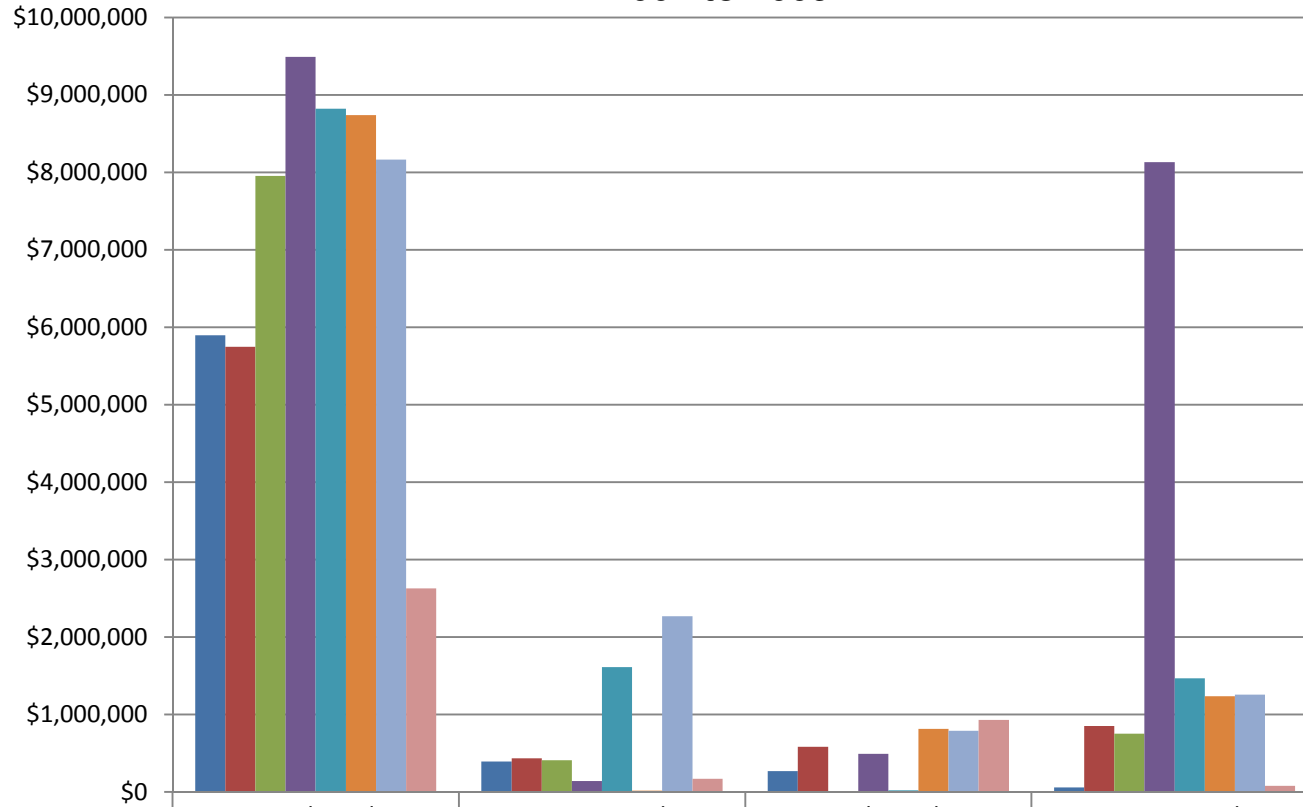
## TOWN OF PETROLIA

### BUILDING PERMITS - 2002 TO 2009

TYPE	2002	2003	2004	2005	2006	2007	2008	2009
Residential	\$5,897,480	\$5,749,154	\$7,954,988	\$9,490,000	\$8,823,288	\$8,740,398	\$8,166,500	\$2,306,036
Comercial	\$393,800	\$435,000	\$409,995	\$141,000	\$1,610,000	\$18,000	\$2,270,000	\$170,000
Industrial	\$269,500	\$581,000	\$0	\$490,000	\$20,000	\$815,120	\$790,000	\$930,000
Institutional	\$59,676	\$851,242	\$753,000	\$8,132,534	\$1,465,700	\$1,237,000	\$1,258,000	\$80,000
Non-Residential	\$49,150	\$56,100	\$168,385	\$164,950	\$112,280	\$55,900	\$173,100	\$212,300
Demolition	\$26,000	\$13,000	\$28,400	\$3,000	\$107,500	\$0	\$0	\$0
Swimming Pools	\$91,800	\$88,689	\$45,000	\$51,000	\$59,000	\$97,000	\$41,500	\$108,000
<b>Totals</b>	<b>\$6,787,406</b>	<b>\$7,774,185</b>	<b>\$9,359,768</b>	<b>\$18,472,484</b>	<b>\$12,197,768</b>	<b>\$10,963,418</b>	<b>\$12,699,100</b>	<b>\$3,806,336</b>

Total # of Permits	82	76	100	92	86	93	83	65
Total # of New Dwelling Units	41	37	44	46	49	50	44	11
Percentage of Total Permits Resulting in New Dwellings	50.00%	48.68%	44.00%	50.00%	56.98%	53.76%	53.01%	16.92%

## Building Permit Category Comparison 2002 to 2009



	Residential	Commercial	Industrial	Institutional
■ 2002	\$5,897,480	\$393,800	\$269,500	\$59,676
■ 2003	\$5,749,154	\$435,000	\$581,000	\$851,242
■ 2004	\$7,954,988	\$409,995	\$0	\$753,000
■ 2005	\$9,490,000	\$141,000	\$490,000	\$8,132,534
■ 2006	\$8,823,288	\$1,610,000	\$20,000	\$1,465,700
■ 2007	\$8,740,398	\$18,000	\$815,120	\$1,237,000
■ 2008	\$8,166,500	\$2,270,000	\$790,000	\$1,258,000
■ 2009	\$2,626,336	\$170,000	\$930,000	\$80,000

## Building Permit Totals - Comparison 2002 to 2009

